

ASCC1 Polyclonal Antibody

Catalog number: 12301-1-AP

Size: 20 µg/150 µl

Source: Rabbit

Isotype: IgG

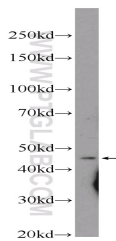
Synonyms:

ASCC1; ASC 1 complex subunit

p50, ASC1p50, ASCC1, CGI 18,

RP11 150D20.4, Trip4 complex

subunit p50



Y79 cells were subjected to SDS PAGE followed by western blot with 12301-1-AP(ASCC1 Antibody) at dilution of 1:600

Background

ASCC1 (also known as p50) is a subunit of an uncharacterized complex, the activating signal co-integrator complex (ASCC). ASCC1 has been reported as regulator fo NF-kB pathway and potently inhibits the expression of NF-kB target genes. Mutations in ASCC1 in patients with Barrett esophagus (BE) have been identified as a risk factor of esophageal adenocarcinoma (EAC).

Applications

Tested applications:	ELISA, WB
Species specificity:	Human,Mouse,Rat; other species not tested.
Calculated ASCC1 MW:	45.5 kDa
Observed ASCC1 MW:	45.5 kDa
Positive WB detected in	Y79 cells, human ileum tissue
Recommended dilution:	WB: 1:200-1:2000

Application key: WB = Western blotting, IHC= Immunohistochemistry, IF= Immunofluorescence, IP= Immunoprecipitation

Immunogen information

Immunogen:	Ag2946
GenBank accession number:	BC012291
Gene ID (NCBI):	51008
Full name:	Activating signal cointegrator 1 complex subunit 1

Product information

Purification method:	Antigen affinity purification
Storage:	PBS with 0.1% sodium azide and 50% glycerol pH 7.3. Store at -20°C.