

## Carboxypeptidase E Polyclonal Antibody

Catalog number: 13710-1-AP

Size: 20 µg/150 µl

Source: Rabbit

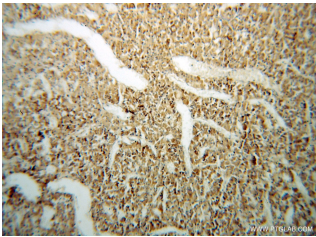
Isotype: IgG

Synonyms:

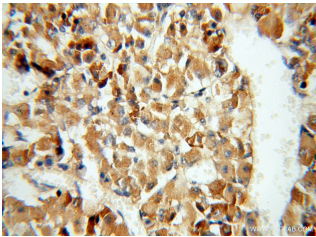
CPE; Carboxypeptidase E,

Carboxypeptidase H, CPE, CPH,

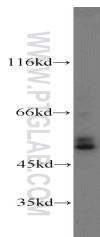
Enkephalin convertase



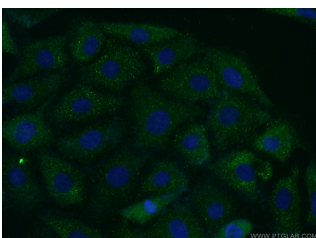
Immunohistochemical of paraffin-embedded human pituitary using 13710-1-AP(CPE antibody) at dilution of 1:50 (under 10x lens)



Immunohistochemical of paraffin-embedded human pituitary using 13710-1-AP(CPE antibody) at dilution of 1:50 (under 40x lens)



mouse brain tissue were subjected to SDS PAGE followed by western blot with 13710-1-AP(CPE antibody) at dilution of 1:600



Immunofluorescent analysis of ( -20 Acetone ) fixed SH-

### Background

CPE(Carboxypeptidase E) is also named as CPH.It belongs to the peptidase M14 family and is involved in the biosynthesis of peptide hormones and neurotransmitters, including insulin.The deduced 476-amino acid human protein contains an N-terminal signal peptide, followed by a 'pro' sequence, a polyarginine stretch, and 2 potential N-glycosylation sites.

### Applications

<b>Tested applications:</b>	ELISA, WB, IHC, IP, IF
<b>Cited applications:</b>	IHC
<b>Species specificity:</b>	Human, Mouse, Rat; other species not tested.
<b>Cited species:</b>	Human, mouse
<b>Calculated Carboxypeptidase E MW:</b>	476aa,53 kDa
<b>Observed Carboxypeptidase E MW:</b>	50kDa, 52 kDa
<b>Positive WB detected in</b>	Mouse brain tissue, human brain tissue, rat brain tissue
<b>Positive IP detected in</b>	Mouse brain tissue
<b>Positive IHC detected in</b>	Human pituitary tissue
<b>Positive IF detected in</b>	SH-SY5Y cells
<b>Recommended dilution:</b>	WB: 1:200-1:2000
	IP: 1:200-1:2000
	IHC: 1:20-1:200
	IF: 1:50-1:500

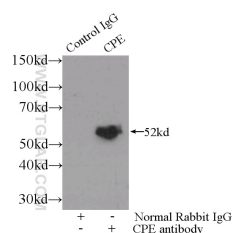
Application key: WB = Western blotting, IHC = Immunohistochemistry, IF = Immunofluorescence, IP = Immunoprecipitation

### Immunogen information

<b>Immunogen:</b>	Ag4647
<b>GenBank accession number:</b>	BC033866
<b>Gene ID (NCBI):</b>	1363
<b>Full name:</b>	Carboxypeptidase E

### Product information

<b>Purification method:</b>	Antigen affinity purification
<b>Storage:</b>	PBS with 0.02% sodium azide and 50% glycerol pH 7.3. Store at -20°C.



IP Result of anti-CPE (IP:13710-1-AP, 3µg;

SY5Y cells using 13710-1-AP( CPE Antibody) at dilution of 1:50 and Alexa Fluor 488- conugated AffiniPure Goat Anti-Rabbit IgG(H+L) Detection:13710-1-AP 1:500) with mouse brain tissue lysate 3500ug.