

PLA2G4D Polyclonal Antibody

Catalog number: 13345-1-AP

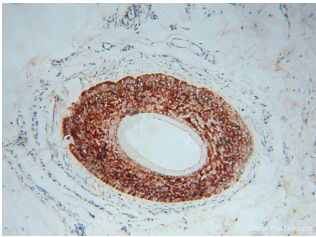
Size: 38 µg/150 µl

Source: Rabbit

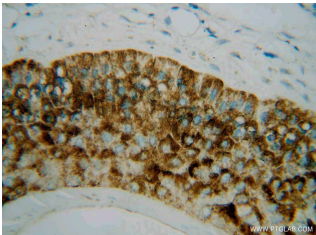
Isotype: IgG

Synonyms:

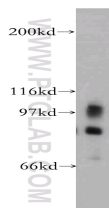
PLA2G4D; Cpla2 delta,
cPLA2delta, Phospholipase A2
group IVD, PLA2G4D



Immunohistochemical of paraffin-embedded human skin cancer using 13345-1-AP(PLA2G4D antibody) at dilution of 1:50 (under 10x lens)



Immunohistochemical of paraffin-embedded human skin cancer using 13345-1-AP(PLA2G4D antibody) at dilution of 1:50 (under 40x lens)



mouse brain tissue were subjected to SDS PAGE followed by western blot with 13345-1-AP(PLA2G4D antibody) at dilution of 1:500

Background

PLA2G4D(Cytosolic phospholipase A2 delta) belongs to the phospholipase A2 enzyme family,catalyzes the hydrolysis of glycerophospholipids at the sn-2 position and then liberate free fatty acids and lysophospholipids.PLA2G4D expression is specifically upregulated in the upper epidermis of patients with inflammatory skin diseases(PMID:14709560).

Applications

Tested applications:	ELISA, WB, IHC
Species specificity:	Human, Mouse; other species not tested.
Calculated PLA2G4D MW:	818aa,92 kDa
Observed PLA2G4D MW:	100 kDa
Positive WB detected in	Mouse brain tissue, Transfected HEK-293 cells
Positive IHC detected in	Human skin cancer tissue
Recommended dilution:	WB: 1:500-1:5000 IHC: 1:20-1:200

Application key: WB = Western blotting, IHC = Immunohistochemistry, IF = Immunofluorescence, IP = Immunoprecipitation

Immunogen information

Immunogen:	Ag4178
GenBank accession number:	BC034571
Gene ID (NCBI):	283748
Full name:	Phospholipase A2, group IVD (cytosolic)

Product information

Purification method:	Antigen affinity purification
Storage:	PBS with 0.02% sodium azide and 50% glycerol pH 7.3. Store at -20°C.