

## BUD31 Polyclonal Antibody

Catalog number: 11798-1-AP

Size: 67 µg/150 µl

Source: Rabbit

Isotype: IgG

Synonyms:

BUD31; BUD31, BUD31

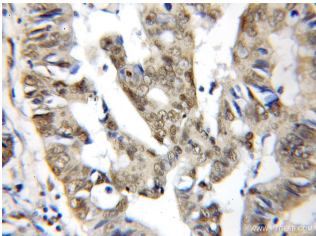
homolog (*S. cerevisiae*), EDG 2,

EDG2, fsAP17, G10, Protein

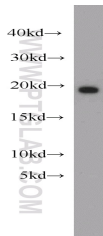
BUD31 homolog, Protein EDG

2, Protein G10 homolog,

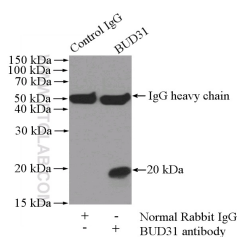
YCR063W



Immunohistochemical of paraffin-embedded human colon cancer using 11798-1-AP(BUD31 antibody) at dilution of 1:100 (under 10x lens)



mouse brain tissue were subjected to SDS PAGE followed by western blot with 11798-1-AP(BUD31 antibody) at dilution of 1:2000



IP Result of anti-BUD31 (IP:11798-1-AP, 4ug; Detection:11798-1-AP 1:1500) with mouse brain tissue lysate 3440ug.

### Applications

Tested applications:	ELISA, WB, IHC, IP
Cited applications:	WB
Species specificity:	Human, Mouse, Rat; other species not tested.
Cited species:	Human
Calculated BUD31 MW:	144aa, 17 kDa
Observed BUD31 MW:	17-20 kDa
Positive WB detected in	Mouse brain tissue, hESC cells, human brain tissue, Jurkat cells, mouse heart tissue, mouse liver tissue, mouse lung tissue, Raji cells
Positive IP detected in	Mouse brain tissue
Positive IHC detected in	Human colon cancer tissue
Recommended dilution:	WB: 1:500-1:5000 IP: 1:500-1:5000 IHC: 1:20-1:200

Application key: WB = Western blotting, IHC = Immunohistochemistry, IF = Immunofluorescence, IP = Immunoprecipitation

### Immunogen information

Immunogen:	Ag2373
GenBank accession number:	BC022821
Gene ID (NCBI):	8896
Full name:	BUD31 homolog ( <i>S. cerevisiae</i> )

### Product information

Purification method:	Antigen affinity purification
Storage:	PBS with 0.1% sodium azide and 50% glycerol pH 7.3. Store at -20°C.