

PHF21A Polyclonal Antibody

Catalog number: 12127-1-AP

Size: 59 µg/150 µl

Source: Rabbit

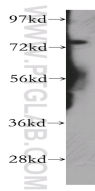
Isotype: IgG

Synonyms:

PHF21A; BHC80, BHC80a, BM

006, KIAA1696, PHD finger

protein 21A, PHF21A



HEK-293 cells were subjected to SDS PAGE followed by western blot with 12127-1-AP (PHF21A antibody) at dilution of 1:500

Applications

Tested applications:	ELISA, WB
Species specificity:	Human, Mouse, Rat; other species not tested.
Calculated PHF21A MW:	680aa, 75 kDa
Observed PHF21A MW:	75 kDa
Positive WB detected in	HEK-293 cells
Recommended dilution:	WB: 1:200-1:2000

Application key: WB = Western blotting, IHC = Immunohistochemistry, IF = Immunofluorescence, IP = Immunoprecipitation

Immunogen information

Immunogen:	Ag2771
GenBank accession number:	BC015714
Gene ID (NCBI):	51317
Full name:	PHD finger protein 21A

Product information

Purification method:	Antigen affinity purification
Storage:	PBS with 0.1% sodium azide and 50% glycerol pH 7.3. Store at -20°C.