

RPL13 Polyclonal Antibody

Catalog number: 11271-1-AP

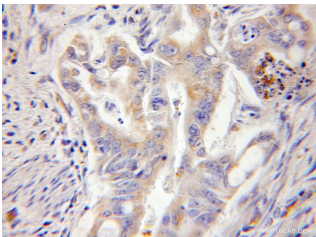
Size: 25 µg/150 µl

Source: Rabbit

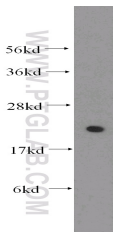
Isotype: IgG

Synonyms:

RPL13; 60S ribosomal protein
L13, BBC1, D16S444E, FLJ27453,
FLJ27454, ribosomal protein
L13, RPL13



Immunohistochemical of paraffin-embedded human colon cancer using 11271-1-AP(RPL13 antibody) at dilution of 1:50 (under 10x lens)



HeLa cells were subjected to SDS PAGE followed by western blot with 11271-1-AP(RPL13 antibody) at dilution of 1:300

Background

The mammalian ribosome comprises 79 ribosomal proteins and four rRNAs, which combine in equimolar ratios to form the small (40S) and large (60S) subunits. Ribosome proteins are a direct and critical target of the PI3K pathway in promoting growth.[PMID:15289434]. RPL13 may be a plausible candidate tumor suppressor gene, as knocking down L13 expression using small interfering RNA (siRNA) resulted in drastic attenuation of cancer cell growth with significant G1 and G2/M arrest of the cell cycle[PMID:16786168].

Applications

Tested applications:	ELISA, WB, IHC
Species specificity:	Human, Mouse, Rat; other species not tested.
Calculated RPL13 MW:	24 kDa
Observed RPL13 MW:	24 kDa
Positive WB detected in	HeLa cells, human lung tissue
Positive IHC detected in	Human colon cancer tissue
Recommended dilution:	WB: 1:200-1:2000 IHC: 1:20-1:200

Application key: WB = Western blotting, IHC = Immunohistochemistry, IF = Immunofluorescence, IP = Immunoprecipitation

Immunogen information

Immunogen:	Ag1814
GenBank accession number:	BC014167
Gene ID (NCBI):	6137
Full name:	Ribosomal protein L13

Product information

Purification method:	Antigen affinity purification
Storage:	PBS with 0.1% sodium azide and 50% glycerol pH 7.3. Store at -20°C.