

## APH1A Polyclonal Antibody

Catalog number: 11643-1-AP

Size: 45 µg/150 µl

Source: Rabbit

Isotype: IgG

Synonyms:

APH1A; 6530402N02Rik, APH

1A, Aph 1alpha, APH1A, CGI

78, Gamma secretase subunit

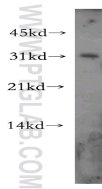
APH 1A, PSF,

UNQ579/PRO1141

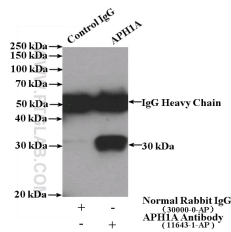
### Applications

<b>Tested applications:</b>	ELISA, WB, IP
<b>Species specificity:</b>	Human, Mouse, Rat; other species not tested.
<b>Calculated APH1A MW:</b>	265aa, 29 kDa
<b>Observed APH1A MW:</b>	30 kDa
<b>Positive WB detected in</b>	HeLa cells, human brain tissue
<b>Positive IP detected in</b>	HeLa cells
<b>Recommended dilution:</b>	WB: 1:200-1:2000
	IP: 1:200-1:1000

Application key: WB = Western blotting, IHC = Immunohistochemistry, IF = Immunofluorescence, IP = Immunoprecipitation



HeLa cells were subjected to SDS PAGE followed by western blot with 11643-1-AP (APH1A antibody) at dilution of 1:500



IP Result of anti-APH1A (IP:11643-1-AP, 4µg; Detection:11643-1-AP 1:300) with HeLa cells lysate 3200ug.

### Immunogen information

<b>Immunogen:</b>	Ag2238
<b>GenBank accession number:</b>	BC015568
<b>Gene ID (NCBI):</b>	51107
<b>Full name:</b>	Anterior pharynx defective 1 homolog A (C. elegans)

### Product information

<b>Purification method:</b>	Antigen affinity purification
<b>Storage:</b>	PBS with 0.1% sodium azide and 50% glycerol pH 7.3. Store at -20°C.