

SERPINI2 Polyclonal Antibody

Catalog number: 13298-1-AP

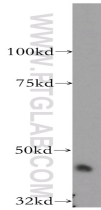
Size: 20 µg/150 µl

Source: Rabbit

Isotype: IgG

Synonyms:

SERPINI2; SERPINI2, Serpin I2,
PI 14, TSA2004, PANCPIN



mouse pancreas tissue were subjected to SDS PAGE followed by western blot with 13298-1-AP(SERPINI2 antibody) at dilution of 1:400

Applications

Tested applications:	ELISA, WB
Species specificity:	Human, mouse, rat; other species not tested.
Calculated SERPINI2 MW:	405aa,46 kDa
Observed SERPINI2 MW:	46kd
Positive WB detected in	Mouse pancreas tissue
Recommended dilution:	WB: 1:200-1:2000

Application key: WB = Western blotting, IHC = Immunohistochemistry, IF = Immunofluorescence, IP = Immunoprecipitation

Immunogen information

Immunogen:	Ag4022
GenBank accession number:	BC027859
Gene ID (NCBI):	5276
Full name:	Serpin peptidase inhibitor, clade I (pancpin), member 2

Product information

Purification method:	Antigen affinity purification
Storage:	PBS with 0.02% sodium azide and 50% glycerol pH 7.3. Store at -20°C.