

## TINAGL1 Polyclonal Antibody

Catalog number: 12077-1-AP

Size: 26 µg/150 µl

Source: Rabbit

Isotype: IgG

Synonyms:

TINAGL1; ARG1, GIS5, LCN7,

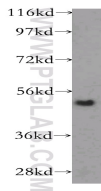
LIECG3, OLRG 2, OLRG2,

PSEC0088, TIN Ag related

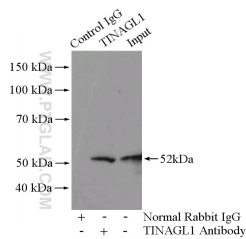
protein, TIN Ag RP, TINAGL,

TINAGL1, TINAGRP,

UNQ204/PRO230



human placenta tissue were subjected to SDS PAGE followed by western blot with 12077-1-AP(TINAGL1 antibody) at dilution of 1:800



IP Result of anti-TINAGL1 (IP:12077-1-AP, 4ug; Detection:12077-1-AP 1:500) with mouse heart tissue lysate 4000ug.

### Applications

Tested applications:	ELISA, WB, IP
Species specificity:	Human,Mouse,Rat; other species not tested.
Calculated TINAGL1 MW:	467aa,52 kDa
Observed TINAGL1 MW:	52 kDa
Positive WB detected in	Human placenta tissue, human adrenal gland tissue
Positive IP detected in	Mouse heart tissue
Recommended dilution:	WB: 1:200-1:2000 IP: 1:200-1:2000

Application key: WB = Western blotting, IHC = Immunohistochemistry, IF = Immunofluorescence, IP = Immunoprecipitation

### Immunogen information

Immunogen:	Ag2721
GenBank accession number:	BC009048
Gene ID (NCBI):	64129
Full name:	Tubulointerstitial nephritis antigen-like 1

### Product information

Purification method:	Antigen affinity purification
Storage:	PBS with 0.1% sodium azide and 50% glycerol pH 7.3. Store at -20°C.