

STOML1 Polyclonal Antibody

Catalog number: 12862-1-AP

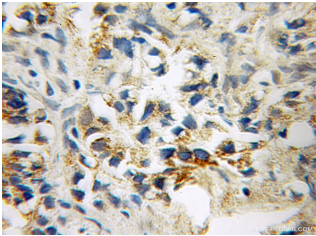
Size: 34 µg/150 µl

Source: Rabbit

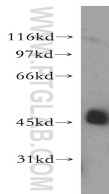
Isotype: IgG

Synonyms:

STOML1; EPB72 like protein 1,
FLJ36370, hUNC 24, Protein unc
24 homolog, SLP 1, SLP1,
stomatin (EPB72) like 1,
Stomatin like protein 1,
Stomatin related protein,
STOML1, STORP, UNC24



Immunohistochemical of paraffin-embedded human gliomas using 12862-1-AP(STOML1 antibody) at dilution of 1:100 (under 10x lens)



A375 cells were subjected to SDS PAGE followed by western blot with 12862-1-AP(STOML1 antibody) at dilution of 1:300

Applications

Tested applications:	ELISA, WB, IHC
Species specificity:	Human, Mouse, Rat; other species not tested.
Calculated STOML1 MW:	45 kDa
Observed STOML1 MW:	45 kDa
Positive WB detected in	A375 cells, human brain tissue
Positive IHC detected in	Human gliomas tissue
Recommended dilution:	WB: 1:500-1:5000 IHC: 1:20-1:200

Application key: WB = Western blotting, IHC = Immunohistochemistry, IF = Immunofluorescence, IP = Immunoprecipitation

Immunogen information

Immunogen:	Ag3978
GenBank accession number:	BC034379
Gene ID (NCBI):	9399
Full name:	Stomatin (EPB72)-like 1

Product information

Purification method:	Antigen affinity purification
Storage:	PBS with 0.1% sodium azide and 50% glycerol pH 7.3. Store at -20°C.