

## CDC42EP2 Polyclonal Antibody

Catalog number: 11824-1-AP

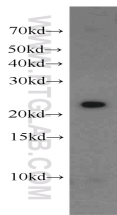
Size: 35 µg/150 µl

Source: Rabbit

Isotype: IgG

Synonyms:

CDC42EP2; BORG1; CEP2



K-562 cells were subjected to SDS PAGE followed by western blot with 11824-1-AP(CDC42EP2 Antibody) at dilution of 1:500

### Applications

**Tested applications:** ELISA, WB  
**Species specificity:** Human, mouse, rat; other species not tested.  
**Positive WB detected in:** K-562 cells, mouse pancreas tissue  
**Calculated CDC42EP2 MW:** 210aa,22.5kd  
**Observed CDC42EP2 MW:** 22kd  
**Recommended dilution:** WB: 1:200-1:2000

Application key: WB = Western blotting, IHC = Immunohistochemistry, IF = Immunofluorescence, IP =

Immunoprecipitation, FC = Flow cytometry

### Immunogen information

**Immunogen:** Ag2392  
**GenBank accession number:** BC022337  
**Gene ID (NCBI):** 10435  
**Full name:** CDC42 effector protein (Rho GTPase binding) 2

### Product information

**Purification method:** Antigen affinity purification  
**Storage:** PBS with 0.1% sodium azide and 50% glycerol pH 7.3. Store at -20°C.