

RBP4 Polyclonal Antibody

Catalog number: 11774-1-AP

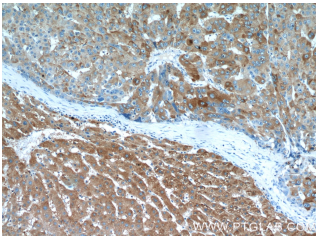
Size: 30 µg/150 µl

Source: Rabbit

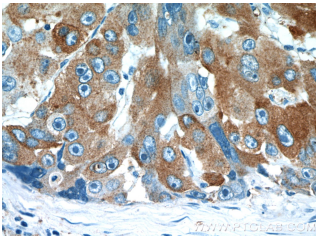
Isotype: IgG

Synonyms:

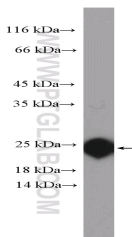
RBP4; Plasma retinol binding protein, PRBP, RBP, RBP4, Retinol binding protein 4



Immunohistochemical of paraffin-embedded human liver cancer using 11774-1-AP(RBP4 antibody) at dilution of 1:50 (under 10x lens)



Immunohistochemical of paraffin-embedded human liver cancer using 11774-1-AP(RBP4 antibody) at dilution of 1:50 (under 40x lens)



human plasma tissue were subjected to SDS PAGE followed by western blot with 11774-1-AP(RBP4 Antibody) at dilution of 1:1000

Background

RBP4 (retinol-binding protein 4) is a carrier protein that transports vitamin A (retinol) from the liver to the peripheral tissues. Synthesized primarily by hepatocytes and adipocytes as a 21 kDa non-glycosylated protein, RBP4 is secreted into the circulation as a retinol-RBP4 complex. In plasma the RBP4-retinol complex is bound to transthyretin (TRR), which prevents prevent kidney filtration. Two truncated forms of RBP4, RBP4-L (truncated at Leu-183) and RBP4-LL (truncated at Leu-182 and Leu-183), exist by proteolytic process. RBP4-L and RBP4-LL, which do not bind TTR, are normally excreted into the urine but accumulate in the serum during renal failure. Urinary RBP4 has been reported as marker for glomerular disease. RBP4 also was identified as an adipokine that elevated in some insulin-resistant states. Measurement of serum RBP4 could be used to assess the risk of insulin resistance, type 2 diabetes, obesity, and cardiovascular disease. (18752671, 16034410)

Applications

Tested applications:	ELISA, IHC, WB
Cited applications:	WB
Species specificity:	Human, Mouse, Rat; other species not tested.
Cited species:	Human
Calculated RBP4 MW:	201aa, 23 kDa
Observed RBP4 MW:	23 kDa
Positive WB detected in	Human plasma tissue, human liver tissue, mouse liver tissue, rat liver tissue
Positive IHC detected in	Human liver cancer tissue, mouse liver tissue
Recommended dilution:	WB: 1:500-1:5000 IHC: 1:20-1:200

Application key: WB = Western blotting, IHC = Immunohistochemistry, IF = Immunofluorescence, IP = Immunoprecipitation

Immunogen information

Immunogen:	Ag2448
GenBank accession number:	BC020633
Gene ID (NCBI):	5950
Full name:	Retinol binding protein 4, plasma

Product information

Purification method:	Antigen affinity purification
Storage:	PBS with 0.1% sodium azide and 50% glycerol pH 7.3. Store at -20°C.