

RPP38 Polyclonal Antibody

Catalog number: 12874-1-AP

Size: 92 µg/150 µl

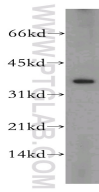
Source: Rabbit

Isotype: IgG

Synonyms:

RPP38; RNaseP protein p38,

RP11 455B2.5, RPP38



HeLa cells were subjected to SDS PAGE followed by western blot with 12874-1-AP(RPP38 antibody) at dilution of 1:500

Applications

Tested applications:	ELISA, WB
Species specificity:	Human, Mouse, Rat; other species not tested.
Calculated RPP38 MW:	38 kDa
Observed RPP38 MW:	38 kDa
Positive WB detected in	HeLa cells, human kidney tissue, mouse liver tissue, rat kidney tissue, rat liver tissue
Recommended dilution:	WB: 1:200-1:2000

Application key: WB = Western blotting, IHC = Immunohistochemistry, IF = Immunofluorescence, IP = Immunoprecipitation

Immunogen information

Immunogen:	Ag3552
GenBank accession number:	BC029494
Gene ID (NCBI):	10557
Full name:	Ribonuclease P/MRP 38kDa subunit

Product information

Purification method:	Antigen affinity purification
Storage:	PBS with 0.1% sodium azide and 50% glycerol pH 7.3. Store at -20°C.