

MYL4 Polyclonal Antibody

Catalog number: 13229-1-AP

Size: 20 µg/150 µl

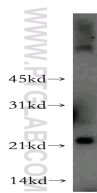
Source: Rabbit

Isotype: IgG

Synonyms:

MYL4; ALC1; AMLC; GT1;

PRO1957



human liver tissue were subjected to SDS PAGE followed by western blot with 13229-1-AP(MYL4 Antibody) at dilution of 1:1000

Applications

Tested applications:	ELISA, WB
Species specificity:	Human, mouse, rat; other species not tested.
Positive WB detected in:	Human liver tissue
Calculated MYL4 MW:	197aa,22kd
Observed MYL4 MW:	22kd
Recommended dilution:	WB: 1:500-1:5000

Application key: WB = Western blotting, IHC = Immunohistochemistry, IF = Immunofluorescence, IP = Immunoprecipitation, FC = Flow cytometry

Immunogen information

Immunogen:	Ag4031
GenBank accession number:	BC030228
Gene ID (NCBI):	4635
Full name:	Myosin, light chain 4, alkali; atrial, embryonic

Product information

Purification method:	Antigen affinity purification
Storage:	PBS with 0.1% sodium azide and 50% glycerol pH 7.3. Store at -20°C.