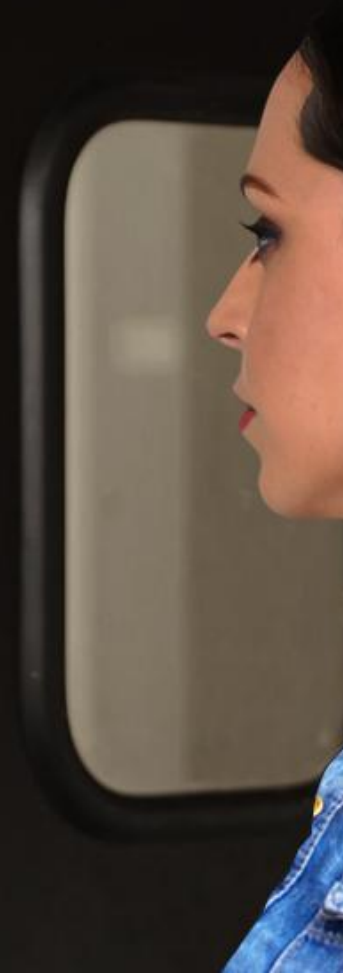


# POP entry





# 100% Touch Free Health Screening Solution

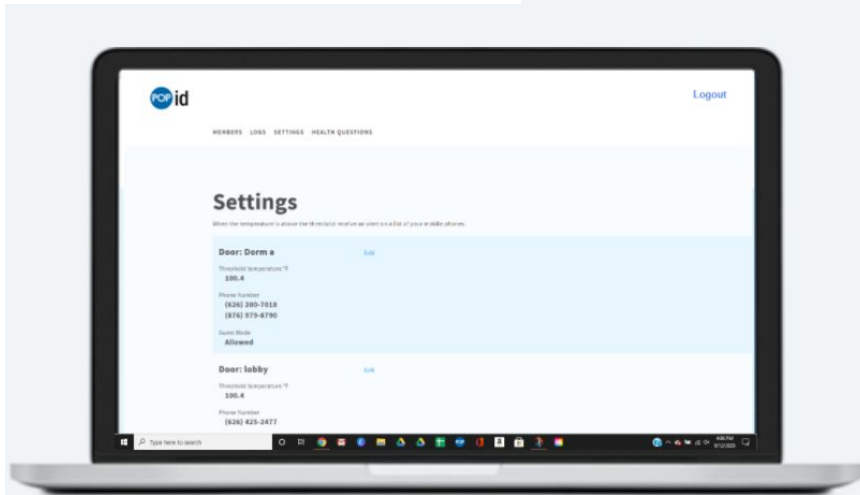
---

- Rapid, non-contact temperature screening
- Secure facial recognition
- Administrator and User notifications
- Touch-free health screening via gesture recognition

\*NO APP required\*

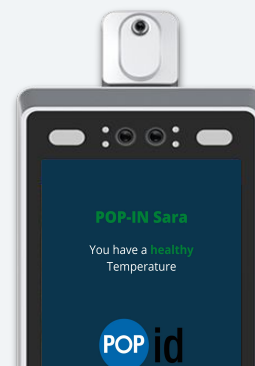


# Key Features



## Admin Notifications

- Admin(s) automatically notified when a fever is recorded
- Name, location and health concern included in notification



## Temperature Screening

- Completely touch free
- Less than 1 second to read
- Accuracy to .5 F



## Facial Recognition

- Enables fully automated temperature testing (instead of hand-held thermometer)
- Ensures discrete interaction
- Enables digitized and automated cloud-based audit trail to show that protocols are followed
- Works with masks and is spoof-proof



# Optional Features

---

## Health Questions

- Customize your own questions
- Up to 7 questions
- No App or mobile device required

*Completely touch-free using gesture recognition*

## Health Badges

- Send users an SMS “Badge” that proves they passed their daily screening
- Allows for one test daily
- Administrators or monitors can confirm health check up prior to group gatherings

## Guest Mode

- Allow guests to take health screening
- No registration required
- No facial recognition required



# Integrated Use Cases

## User Check-in/Health Check

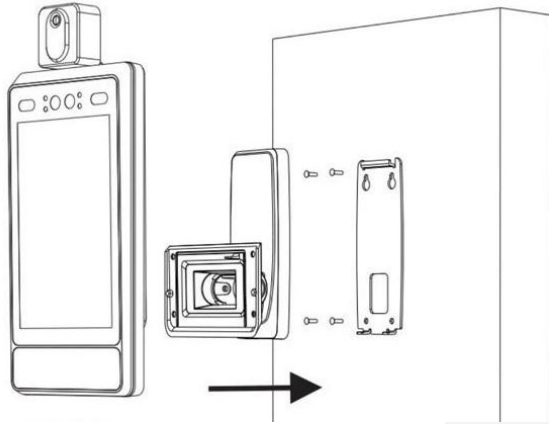
- HR time & attendance
- Verified identity
- Hands free

## Access Control

- Can be connected to door locks for access control (with or without temperature readings)

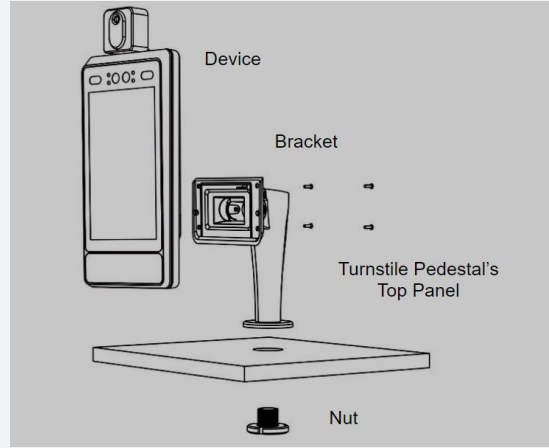


# Mounting Options

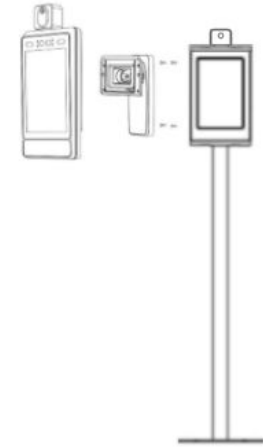


**Complimentary Wall Mount**

- ADA Compliant

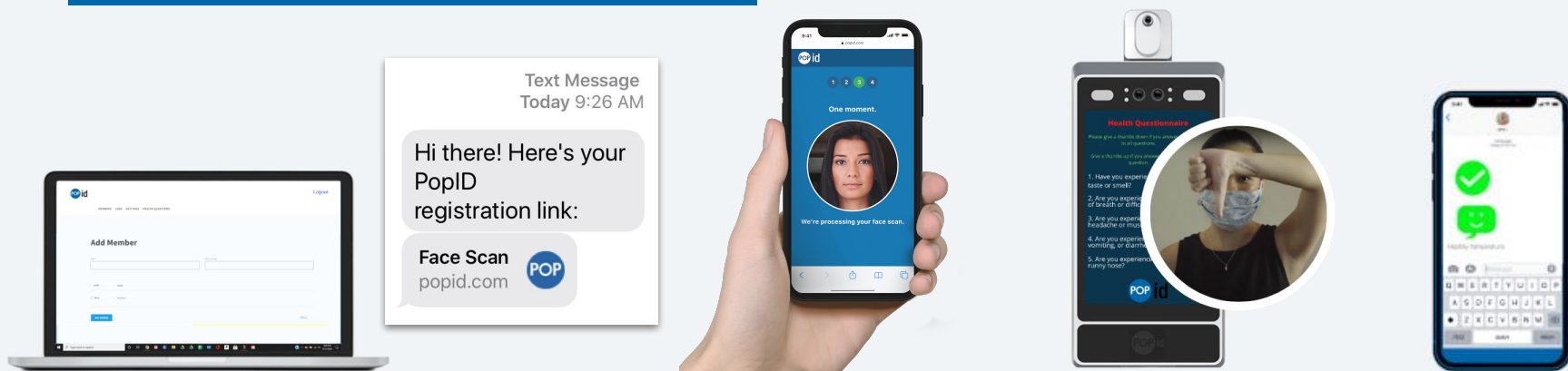


**Desk Mount**



**Free Standing Pedestal**

# How it Works



1

Admin sets health questions & enters user names and phone #'s

2

User receives an SMS with a secure registration link

3

Device identifies user and presents health questionnaire

4

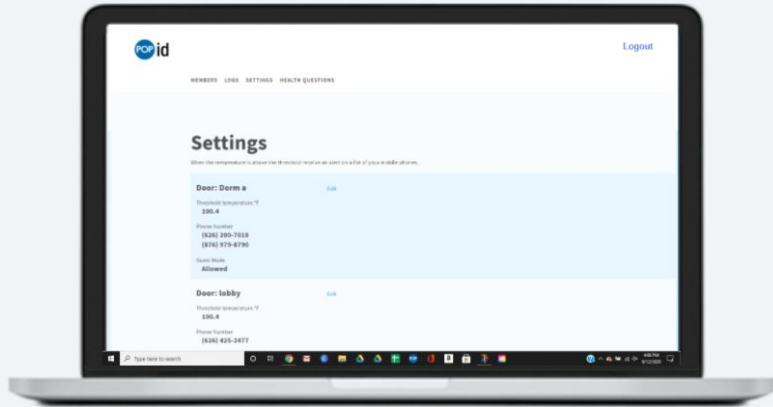
User gives thumbs up or thumbs down to answer questions

5

User receives a healthy badge or administrator is notified of concern

# Administrative Governance

---



## Monitoring

- User friendly web-based dashboard
- Cloud-based for mobile and desktop access
- Single-dashboard, multi-location monitoring
- Automated, HIPAA-neutral logging

## Advanced Settings

- Control who has access to points of entry
- Manage alerts and notifications
- Designate fever threshold(s)
- Enable optional features



# Customer Testimonial

---



**University of Redlands**



*“I am extremely satisfied by the progress made by the University of Redlands to better insure it’s students, faculty, and staff with the safest conditions, and this technology is the best way of doing that.”*

- Bill Southworth, The University of Redlands