

## SFRS17A Polyclonal Antibody

Catalog number: 13441-1-AP

Size: 49 µg/150 µl

Source: Rabbit

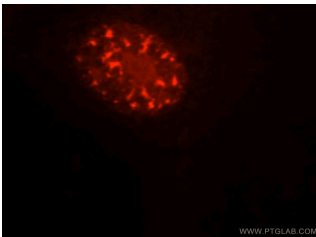
Isotype: IgG

Synonyms:

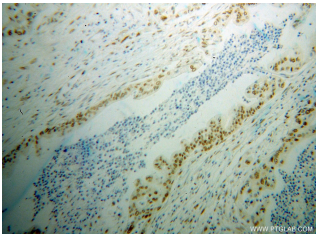
SFRS17A; 721P, B lymphocyte antigen, CCDC133, CXorf3,

DXYS155E, Protein XE7,

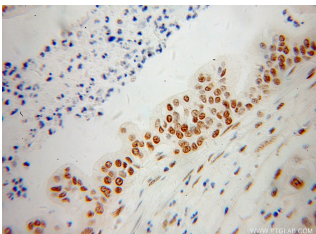
SFRS17A, XE7, XE7Y



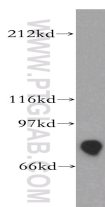
Immunofluorescent analysis of HT1080 cells, using SFRS17A antibody 13441-1-AP at 1:25 dilution and Rhodamine-labeled goat anti-rabbit IgG (red).



Immunohistochemical of paraffin-embedded human pancreas cancer using 13441-1-AP(SFRS17A antibody) at dilution of 1:100 (under 10x lens)



Immunohistochemical of paraffin-embedded human pancreas cancer using 13441-1-AP(SFRS17A antibody) at dilution of 1:100 (under 40x lens)



human kidney tissue were

### Applications

<b>Tested applications:</b>	ELISA, WB, IHC, IF, IP
<b>Species specificity:</b>	Human; other species not tested.
<b>Calculated SFRS17A MW:</b>	695aa,81 kDa
<b>Observed SFRS17A MW:</b>	81 kDa
<b>Positive WB detected in</b>	Human kidney tissue, human heart tissue
<b>Positive IP detected in</b>	Jurkat cells
<b>Positive IHC detected in</b>	Human pancreas cancer tissue
<b>Positive IF detected in</b>	HT-1080 cells
<b>Recommended dilution:</b>	WB: 1:500-1:5000
	IP: 1:200-1:2000
	IHC: 1:20-1:200
	IF: 1:10-1:100

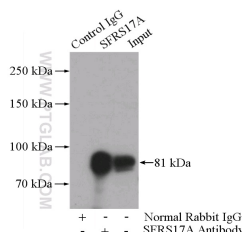
Application key: WB = Western blotting, IHC = Immunohistochemistry, IF = Immunofluorescence, IP = Immunoprecipitation

### Immunogen information

<b>Immunogen:</b>	Ag4252
<b>GenBank accession number:</b>	BC028151
<b>Gene ID (NCBI):</b>	8227
<b>Full name:</b>	Splicing factor, arginine/serine-rich 17A

### Product information

<b>Purification method:</b>	Antigen affinity purification
<b>Storage:</b>	PBS with 0.02% sodium azide and 50% glycerol pH 7.3. Store at -20°C.



IP Result of anti-SFRS17A

subjected to SDS PAGE (IP:13441-1-AP, 4ug;  
followed by western blot with Detection:13441-1-AP 1:500)  
13441-1-AP(SFRS17A with Jurkat cells lysate  
antibody) at dilution of 1:400 2800ug.