

SPAG8 Polyclonal Antibody

Catalog number: 13915-1-AP

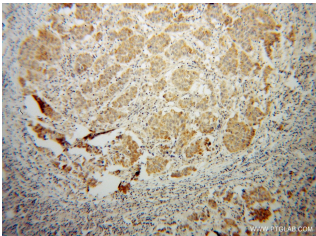
Size: 29 µg/150 µl

Source: Rabbit

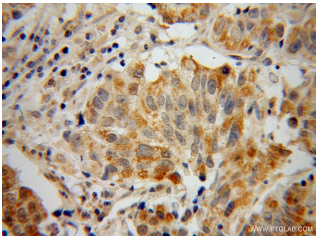
Isotype: IgG

Synonyms:

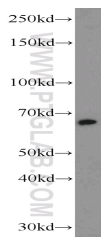
SPAG8; BS 84, HSD 1, hSMP 1, SMP 1, SMP1, SPAG3, SPAG8, sperm associated antigen 8, Sperm membrane protein 1, Sperm membrane protein BS 84



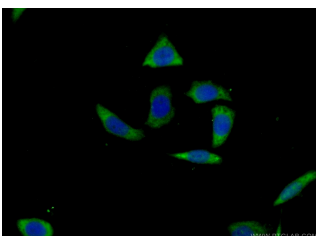
Immunohistochemical of paraffin-embedded human prostate cancer using 13915-1-AP (SPAG8 antibody) at dilution of 1:100 (under 10x lens)



Immunohistochemical of paraffin-embedded human prostate cancer using 13915-1-AP (SPAG8 antibody) at dilution of 1:100 (under 40x lens)



PC-3 cells were subjected to SDS PAGE followed by western blot with 13915-1-AP (SPAG8 antibody) at dilution of 1:1000



Background

SPAG8, also named as Sperm-associated antigen 8 or HSD-1, is a 426 amino acid protein, which is expressed in testis (germ cells), but not in liver, kidney, prostate and small intestine. SPAG8 may play a role in fertility and microtubule formation through interaction with RANBP9. SPAG8 as testis-specific protein is produced during male germ cell differentiation and functions in a germ cell type- and stage-specific manner during spermatogenesis.

Applications

Tested applications:	ELISA, WB, IHC, IP, IF
Cited applications:	IHC
Species specificity:	Human, Mouse; other species not tested.
Cited species:	Human
Calculated SPAG8 MW:	45 kDa, 54 kDa
Observed SPAG8 MW:	56-65 kDa
Positive WB detected in	PC-3 cells, DU 145 cells, human testis tissue, mouse testis tissue
Positive IP detected in	Mouse testis tissue
Positive IHC detected in	Human prostate cancer tissue
Positive IF detected in	PC-3 cells
Recommended dilution:	WB: 1:500-1:5000 IP: 1:200-1:2000 IHC: 1:20-1:200 IF: 1:50-1:500

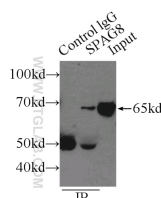
Application key: WB = Western blotting, IHC = Immunohistochemistry, IF = Immunofluorescence, IP = Immunoprecipitation

Immunogen information

Immunogen:	Ag4910
GenBank accession number:	BC019247
Gene ID (NCBI):	26206
Full name:	Sperm associated antigen 8

Product information

Purification method:	Antigen affinity purification
Storage:	PBS with 0.02% sodium azide and 50% glycerol pH 7.3. Store at -20°C.



Immunofluorescent analysis of (-20 Ethanol) fixed PC-3 cells using 13915-1-AP (SPAG8 Antibody) at dilution of 1:50 and Alexa Fluor 488- conjugated AffiniPure Goat Anti-Rabbit IgG(H+L)

IP Result of anti-SPAG8 (IP:13915-1-AP, 3ug; Detection:13915-1-AP 1:500) with mouse testis tissue lysate 6000ug.