

MCCC2 Polyclonal Antibody

Catalog number: 12117-1-AP

Size: 45 µg/150 µl

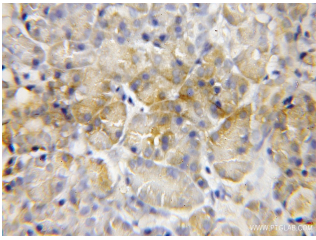
Source: Rabbit

Isotype: IgG

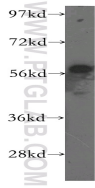
Synonyms:

MCCC2; MCCC2, MCCase

subunit beta, MCCB



Immunohistochemical of paraffin-embedded human pancreas cancer using 12117-1-AP (MCCC2 antibody) at dilution of 1:50 (under 10x lens)



human liver tissue were subjected to SDS PAGE followed by western blot with 12117-1-AP (MCCC2 antibody) at dilution of 1:400

Background

MCCC2 (Methylcrotonoyl-CoA carboxylase beta chain, mitochondrial) is also named as MCCB and belongs to the AccD/PCCB family. The putative 563-amino acid polypeptide has a calculated molecular mass of 61 kD and contains an N-terminal mitochondrial targeting sequence (PMID:11181649). It catalyzes carboxylation of 3 methylcrotonyl CoA to form 3 methylglutaconyl-CoA and is probably a dodecamer composed of six biotin-containing alpha subunits and six beta subunits. Defects in MCCC2 are the cause of methylcrotonoyl-CoA carboxylase 2 deficiency (MCC2D).

Applications

Tested applications:	ELISA, WB, IHC
Species specificity:	Human, mouse, rat; other species not tested.
Calculated MCCC2 MW:	563aa, 61 kDa
Observed MCCC2 MW:	61kd
Positive WB detected in	Human liver tissue
Positive IHC detected in	Human pancreas cancer
Recommended dilution:	WB: 1:200-1:2000 IHC: 1:20-1:200

Application key: WB = Western blotting, IHC = Immunohistochemistry, IF = Immunofluorescence, IP = Immunoprecipitation

Immunogen information

Immunogen:	Ag2767
GenBank accession number:	BC014897
Gene ID (NCBI):	64087
Full name:	Methylcrotonoyl-Coenzyme A carboxylase 2 (beta)

Product information

Purification method:	Antigen affinity purification
Storage:	PBS with 0.1% sodium azide and 50% glycerol pH 7.3. Store at -20°C.