

## RAP1B-Specific Polyclonal Antibody

Catalog number: 10840-1-AP

Size: 20 µg/150 µl

Source: Rabbit

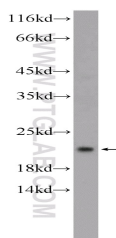
Isotype: IgG

Synonyms:

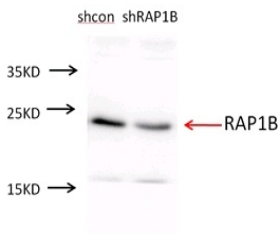
RAP1B; DKFZp586H0723, GTP binding protein smg p21B, K

REV, RAL1B, RAP1B, Ras

related protein Rap 1b



human brain tissue were subjected to SDS PAGE followed by western blot with 10840-1-AP(RAP1B antibody) at dilution of 1:300



A549 cells were subjected to SDS PAGE followed by western blot with 10840-1-AP(RAP1B antibody) at dilution of 1:300. (Data provided by Angran Biotech ([www.miRNAlab.com](http://www.miRNAlab.com))).

### Background

RAP1B is a member of the RAS-like small GTP-binding protein superfamily. Members of this family regulate multiple cellular processes including cell adhesion and growth and differentiation. RAP1B localizes to cellular membranes and has been shown to regulate integrin-mediated cell signaling. It also plays a role in regulating outside-in signaling in platelets. The antibody is specific to RAP1B.

### Applications

Tested applications:	ELISA, WB
Cited applications:	WB
Species specificity:	Human, Mouse, Rat; other species not tested.
Cited species:	Human
Calculated RAP1B-Specific MW:	21 kDa
Observed RAP1B-Specific MW:	21 kDa
Positive WB detected in:	Human brain tissue, A549, mouse brain tissue
Recommended dilution:	WB: 1:200-1:1000

Application key: WB = Western blotting, IHC = Immunohistochemistry, IF = Immunofluorescence, IP = Immunoprecipitation

### Immunogen information

Immunogen:	Ag1282
GenBank accession number:	BC000176
Gene ID (NCBI):	5908
Full name:	RAP1B, member of RAS oncogene family

### Product information

Purification method:	Antigen affinity purification
Storage:	PBS with 0.1% sodium azide and 50% glycerol pH 7.3. Store at -20°C.