

LRRC4C Polyclonal Antibody

Catalog number: 13845-1-AP

Size: 50 µg/150 µl

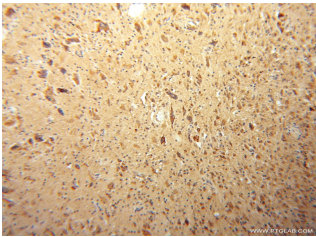
Source: Rabbit

Isotype: IgG

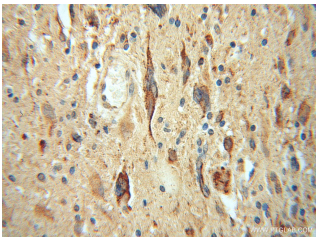
Synonyms:

LRRC4C; KIAA1580, LRRC4C,

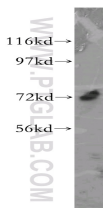
Netrin G1 ligand, NGL 1, NGL1



Immunohistochemical of paraffin-embedded human gliomas using 13845-1-AP(LRRC4C antibody) at dilution of 1:50 (under 10x lens)



Immunohistochemical of paraffin-embedded human gliomas using 13845-1-AP(LRRC4C antibody) at dilution of 1:50 (under 40x lens)



Y79 cells were subjected to SDS PAGE followed by western blot with 13845-1-AP(LRRC4C antibody) at dilution of 1:500

Applications

Tested applications:	ELISA, IHC, WB
Species specificity:	Human, Mouse, Rat; other species not tested.
Calculated LRRC4C MW:	640aa, 72 kDa
Observed LRRC4C MW:	72 kDa
Positive WB detected in	Y79 cells
Positive IHC detected in	Human gliomas tissue
Recommended dilution:	WB: 1:200-1:2000 IHC: 1:20-1:200

Application key: WB = Western blotting, IHC = Immunohistochemistry, IF = Immunofluorescence, IP = Immunoprecipitation

Immunogen information

Immunogen:	Ag4811
GenBank accession number:	BC041374
Gene ID (NCBI):	57689
Full name:	Leucine rich repeat containing 4C

Product information

Purification method:	Antigen affinity purification
Storage:	PBS with 0.02% sodium azide and 50% glycerol pH 7.3. Store at -20°C.