

ASRGL1 Polyclonal Antibody

Catalog number: 11400-1-AP

Size: 30 µg/150 µl

Source: Rabbit

Isotype: IgG

Synonyms:

ASRGL1; ALP, ALP1,

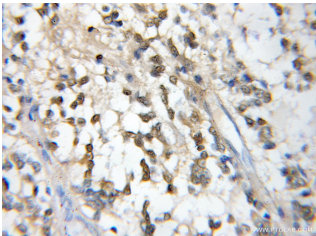
asparaginase like 1,

Asparaginase like protein 1,

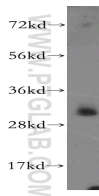
ASRGL1, CRASH, FLJ22316, L

asparaginase, L asparagine

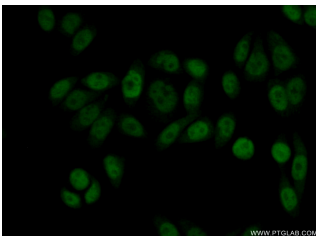
amidohydrolase



Immunohistochemical of paraffin-embedded human gliomas using 11400-1-AP(ASRGL1 antibody) at dilution of 1:50 (under 10x lens)



HeLa cells were subjected to SDS PAGE followed by western blot with 11400-1-AP(ASRGL1 antibody) at dilution of 1:500



Immunofluorescent analysis of (10% Formaldehyde) fixed HeLa cells using 11400-1-AP(ASRGL1 Antibody) at dilution of 1:50 and Alexa Fluor 488-conjugated AffiniPure Goat Anti-Rabbit IgG(H+L)

Background

Asparaginase-like protein 1 (ASRGL1) is also named as ALP, CRASH and belongs to the Ntn-hydrolase family. ASRGL1 has both L-asparaginase and beta-aspartyl peptidase activity. It may be involved in the production of L-aspartate, which can act as an excitatory neurotransmitter in some brain regions. ASRGL1 has 2 isoforms produced by alternative splicing with the MW of 32 kDa and 19 kDa.

Applications

| | |
|--------------------------|---|
| Tested applications: | ELISA, WB, IHC, IP, IF |
| Cited applications: | WB |
| Species specificity: | Human, Mouse, Rat; other species not tested. |
| Cited species: | Human |
| Calculated ASRGL1 MW: | 308aa, 32 kDa |
| Observed ASRGL1 MW: | 32 kDa |
| Positive WB detected in | HeLa cells |
| Positive IP detected in | HeLa cells |
| Positive IHC detected in | Human gliomas tissue |
| Positive IF detected in | HeLa cells |
| Recommended dilution: | WB: 1:200-1:2000 IP: 1:200-1:2000 IHC: 1:20-1:200 IF: 1:50-1:500 |

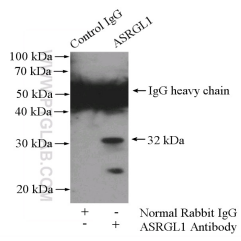
Application key: WB = Western blotting, IHC = Immunohistochemistry, IF = Immunofluorescence, IP = Immunoprecipitation

Immunogen information

| | |
|---------------------------|---------------------|
| Immunogen: | Ag1955 |
| GenBank accession number: | BC021295 |
| Gene ID (NCBI): | 80150 |
| Full name: | Asparaginase like 1 |

Product information

| | |
|----------------------|---|
| Purification method: | Antigen affinity purification |
| Storage: | PBS with 0.1% sodium azide and 50% glycerol pH 7.3. Store at -20°C. |



IP Result of anti-ASRGL1
(IP:11400-1-AP, 4ug;
Detection:11400-1-AP 1:500)
with HeLa cells lysate 3200ug.