

FUS/TLS Polyclonal Antibody

Catalog number: 11570-1-AP

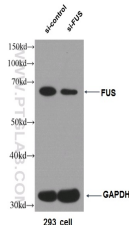
Size: 74 µg/150 µl

Source: Rabbit

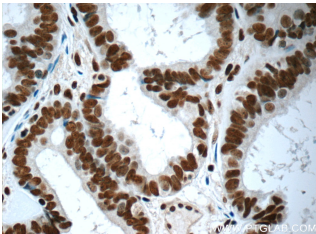
Isotype: IgG

Synonyms:

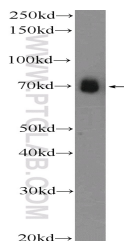
FUS; 75 kDa DNA pairing protein, FUS, FUS1, FUS-CHOP, hnRNP P2, Oncogene FUS, Oncogene TLS, POMp75, RNA binding protein FUS, TLS, TLS/CHOP



WB result of FUS antibody (11570-1-AP, 1:5000) with si-Control and si-FUS transfected HEK 293 cells.



Immunohistochemistry of paraffin-embedded human ovary tumor tissue slide using 11570-1-AP(FUS/TLS Antibody) at dilution of 1:50 (under 40x lens)



HEK-293 cells were subjected to SDS PAGE followed by western blot with 11570-1-AP(FUS/TLS Antibody) at dilution of 1:2000

Background

FUS (also named TLS and POMp75) belongs to the RRM TET family. FUS may play a role in the maintenance of genomic integrity; it binds both single-stranded and double-stranded DNA and promotes ATP-independent annealing of complementary single-stranded DNAs and D-loop formation in superhelical double-stranded DNA. FUS is also an RNA-binding protein, and its links to neurodegenerative disease proffer the intriguing possibility that altered RNA metabolism or RNA processing may underlie or contribute to neuron degeneration[PMID: 22640227]. FUS may be a cause of angiomatoid fibrous histiocytoma (AFH) and is implicated in certain forms of amyotrophic lateral sclerosis (ALS) and frontotemporal dementias (FTDs) such as frontotemporal lobar dementia with ubiquitin inclusions (FTLD-U)[PMID: 22640227]. This antibody is a rabbit polyclonal antibody raised against an internal region of human FUS.

Applications

Tested applications:	ELISA, IF, IP, WB, IHC, FC
Cited applications:	IF, IHC, WB
Species specificity:	Human, Mouse, Rat; other species not tested.
Cited species:	Human, mouse
Calculated FUS/TLS MW:	75 kDa
Observed FUS/TLS MW:	73 kDa
Positive WB detected in	HEK-293 cells, HEK-293, HeLa cells, HepG2 cells, HL-60 cells, human kidney tissue, Jurkat cells, K-562 cells, mouse brain tissue, SMMC-7721 cells
Positive IP detected in	K-562 cells
Positive IHC detected in	Human ovary tumor tissue, human brain tissue, human breast cancer tissue
Positive IF detected in	HepG2 cells
Positive FC detected in	HeLa cells
Application note:	For IHC detection, 60160-1-Ig (mAb) is better.
Recommended dilution:	WB: 1:1000-1:10000
	IP: 1:500-1:5000
	IHC: 1:20-1:200
	IF: 1:10-1:100
	FC: N/A

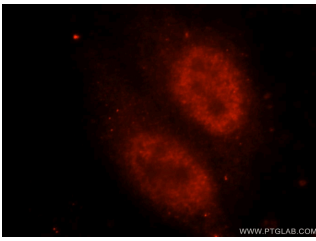
Application key: WB = Western blotting, IHC = Immunohistochemistry, IF = Immunofluorescence, IP = Immunoprecipitation

Immunogen information

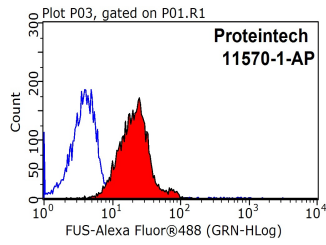
Immunogen:	Ag2150
GenBank accession number:	BC026062
Gene ID (NCBI):	2521
Full name:	Fusion (involved in t(12;16) in malignant liposarcoma)

Product information

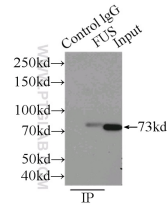
Purification method:	Antigen affinity purification
Storage:	PBS with 0.1% sodium azide and 50% glycerol pH 7.3. Store at -20°C.



Immunofluorescent analysis of HepG2 cells, using FUS antibody 11570-1-AP at 1:25 dilution and Rhodamine-labeled goat anti-rabbit IgG (red).



1X10⁶ HeLa cells were stained with 0.2ug FUS/TLS antibody (11570-1-AP, red) and control antibody (blue). Fixed with 90% MeOH blocked with 3% BSA (30 min). Alexa Fluor 488-conjugated AffiniPure Goat Anti-Rabbit IgG(H+L) with dilution 1:1500.



IP Result of anti-FUS (IP:11570-1-AP, 3ug; Detection:11570-1-AP 1:1000) with K-562 cells lysate 4000ug.