

CURIOSIS



# ***Celloger<sup>®</sup> Pro***

## ***Automated live cell imaging system***

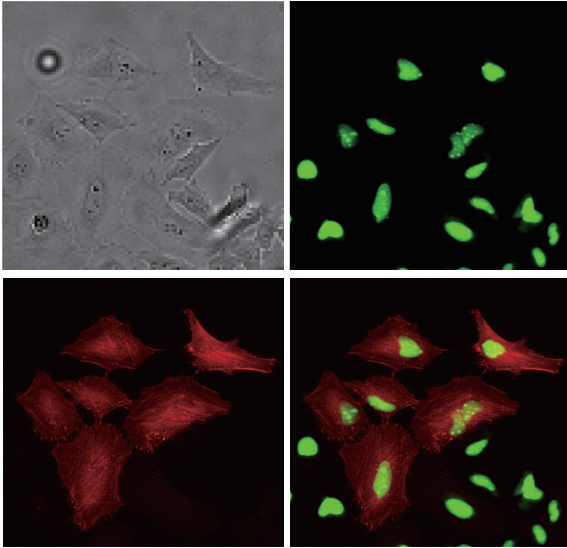


Seamless imaging, Limitless insights

**Discover the possibilities with Celloger<sup>®</sup> Pro**

- » Real-time cell monitoring inside an incubator
- » Dual fluorescence microscopy for enhanced imaging
- » Multi-point time-lapse imaging capability
- » User-interchangeable objective lens option
- » Intuitive interface and user-friendly tools

## Multicolor fluorescence and bright-field imaging



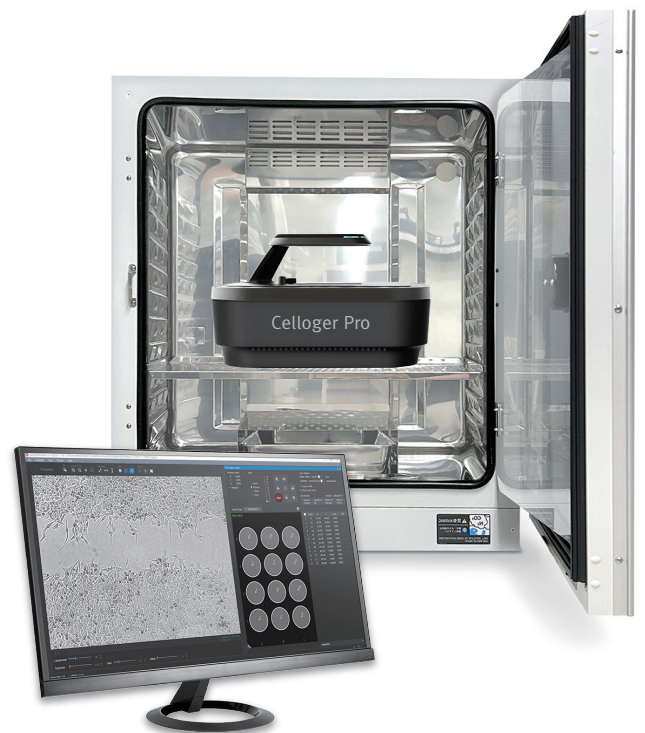
With its dualcolor fluorescence and bright-field imaging capabilities, Celloger® Pro enables the capture of **high-quality and high-resolution images**.

With enhanced scanning methods and innovative merging techniques, the system **reduces scanning time**, enabling researchers to analyze cellular dynamics with exceptional clarity and efficiency.

## Real-time monitoring inside incubator

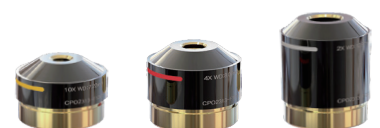
Celloger® Pro is designed to facilitate real-time monitoring of cells inside an incubator. By simply placing the device within the incubator and connecting it to an external PC, researchers are able to **remotely observe cells in real time**.

With the time-lapse function, cell images are captured according to the schedule set by the researcher; the images can then be **easily converted into time-lapse videos**.

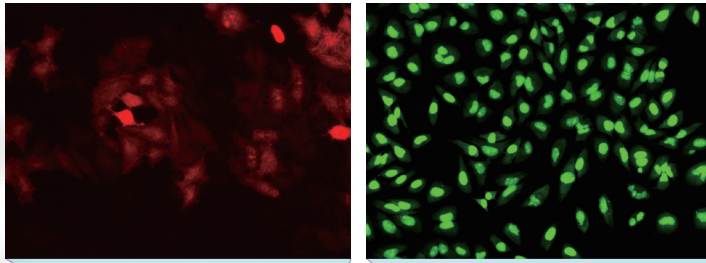


## User-interchangeable objective lens

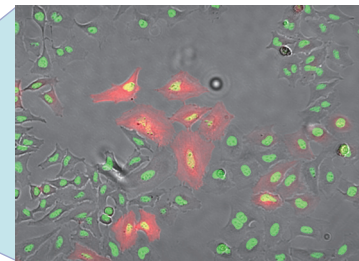
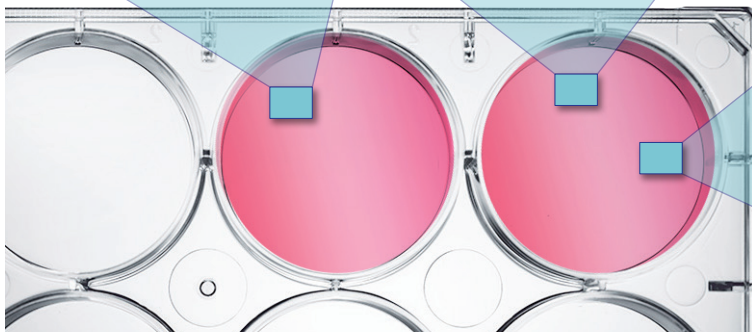
Celloger® Pro offers user-interchangeable objective lenses, **providing flexibility** to researchers based on their specific study requirements. With options such as **2X, 4X, 10X objectives**, users can switch between these lenses by hand.



## Capturing images from multiple positions



Celloger® Pro enables imaging of samples in multiple positions by automatically **moving the integrated camera** while keeping the vessel and sample fixed on the stage. This ensures a **stable environment for the cells**, resulting in enhanced image quality and **precise research outcomes**.

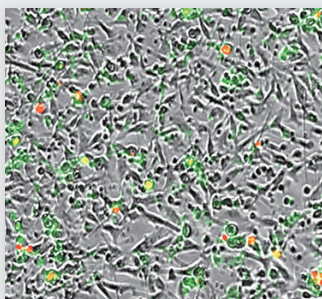


## Compatible with different vessel types

The system is compatible with different cell culture vessels such as **well plates** (up to 96 wells), **flasks**, **dishes**, and **slides**, and can switch between them by simply replacing the vessel holders for specific needs.

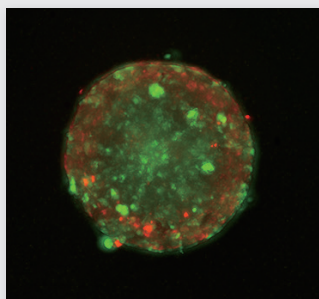


## Applications



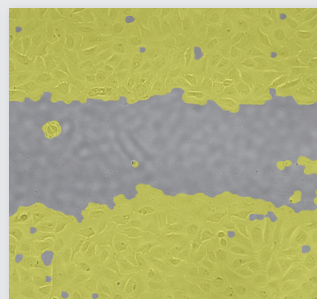
### Cytotoxicity

Monitor and measure the toxic effects of substances on cells, aiding various applications such as drug development and screening



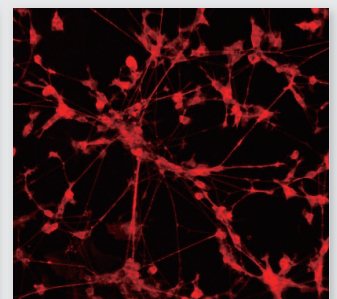
### Spheroid assay

Study spheroid formation and growth in real-time to track cell behavior and drug responses



### Scratch wound assay

Assess the impact of treatments on key cellular processes such as migration, proliferation, and wound healing



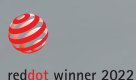
### Neurite outgrowth

Study the mechanisms and factors involved in neuronal development, connectivity, and regeneration

## Specification

Imaging modes	Brightfield, Dual fluorescence (Green & Red)
Objective lens	2X, 4X, 10X (User-interchangeable)
Fluorescence	Green (EX : 470/40, EM : 540/50) Red (EX: 562/40, EM: 641/75)
Stage	Fully motorized XYZ (Fixed stage, camera moving type)
Camera	High sensitivity 5.0 MP CMOS
Imaging positions	Multiple
Field of view	2X (2.02 x 1.49 mm), 4X (1.41 x 1.05 mm), 10X (0.70 x 0.52 mm)
Focus	Autofocus, Manual focus
Imaging methods	Single/multicolor, stitching, Z-stacking, time-lapse, real-time recording
Included software	Scan App, Analysis App
Dimensions (H x W x L)	250 x 338 x 412 mm
Weight	9.6 kg
Culture vessels	Well plate up to 96-well, flask, dish, slide
File export format	TIFF, AVI (JPEG, PNG)
Operating environment	10~40°C, 20~95% humidity
Power requirement	100~240V, ~50/60Hz
O/S required	Windows 10 and above
Incubator specification	Above 200L (recommended)

## List of Awards (Celloger Series)



Curiosis Inc.

+82 2 508 5237 | sales@curiosis.com | South Korea

FOR RESEARCH USE ONLY and not for use in diagnostic procedures. Specifications subject to change without notice.

CRB011-2306Rev01