

EPS8 Polyclonal Antibody

Catalog number: 12455-1-AP

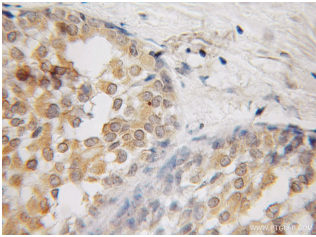
Size: 73 µg/150 µl

Source: Rabbit

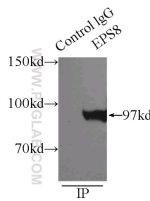
Isotype: IgG

Synonyms:

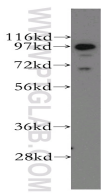
EPS8; EPS8



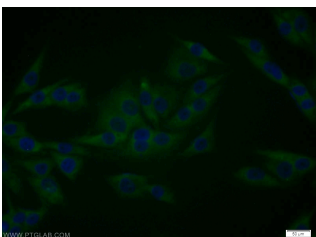
Immunohistochemical of paraffin-embedded human breast cancer using 12455-1-AP (EPS8 antibody) at dilution of 1:50 (under 10x lens)



IP Result of anti-EPS8 (IP:12455-1-AP, 3µg; Detection:12455-1-AP 1:500) with HeLa cells lysate 3800µg.



human brain tissue were subjected to SDS PAGE followed by western blot with 12455-1-AP (EPS8 antibody) at dilution of 1:500



Immunofluorescent analysis of A375 cells using 12455-1-AP (EPS8 Antibody) at dilution of 1:25 and Alexa

Background

Epidermal growth factor receptor Pathway Substrate 8 (EPS8) is a crucial regulator of the actin cytoskeleton dynamics accompanying cell motility and invasion. This protein contains one PH domain and one SH3 domain leading to its binding activity with multiple cellular targets. EPS8 can function as a unique actin capping protein specifically required for dendritic cell migration and plays roles in the regulation of axonal filopodia in neuronal development and synapse formation. The EPS8 gene may contribute to the development of a subset of colorectal cancers and could have applications in diagnosis and treatment.

Applications

Tested applications:	ELISA, WB, IHC, IP, IF
Species specificity:	Human; other species not tested.
Calculated EPS8 MW:	822aa,92 kDa
Observed EPS8 MW:	97 kDa
Positive WB detected in	Human brain tissue, A375 cells, HeLa cells, human heart tissue
Positive IP detected in	HeLa cells
Positive IHC detected in	Human breast cancer tissue
Positive IF detected in	A375 cells
Recommended dilution:	WB: 1:200-1:2000 IP: 1:200-1:2000 IHC: 1:20-1:200 IF: 1:10-1:100

Application key: WB = Western blotting, IHC = Immunohistochemistry, IF = Immunofluorescence, IP = Immunoprecipitation

Immunogen information

Immunogen:	Ag3121
GenBank accession number:	BC030010
Gene ID (NCBI):	2059
Full name:	Epidermal growth factor receptor pathway substrate 8

Product information

Purification method:	Antigen affinity purification
Storage:	PBS with 0.1% sodium azide and 50% glycerol pH 7.3. Store at -20°C.

**Fluor 488-conjugated
AffiniPure Goat Anti-Rabbit
IgG(H+L)**