

## IGJ Polyclonal Antibody

Catalog number: 13688-1-AP

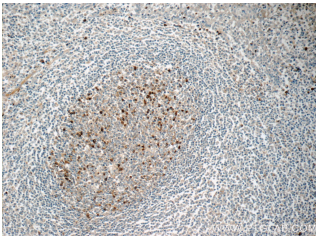
Size: 31 µg/150 µl

Source: Rabbit

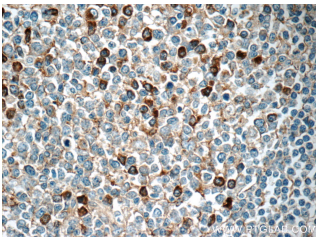
Isotype: IgG

Synonyms:

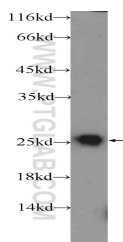
IGJ; IGCJ, IGJ, Immunoglobulin J chain, JCH



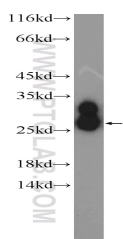
Immunohistochemistry of paraffin-embedded human tonsillitis tissue slide using 13688-1-AP (IGJ Antibody) at dilution of 1:50 (under 10x lens)



Immunohistochemistry of paraffin-embedded human tonsillitis tissue slide using 13688-1-AP (IGJ Antibody) at dilution of 1:50 (under 40x lens)



mouse spleen tissue were subjected to SDS PAGE followed by western blot with 13688-1-AP (IGJ Antibody) at dilution of 1:300



human plasma tissue were subjected to SDS PAGE followed by western blot with

### Background

IGJ, the immunoglobulin J chain, serves to link two monomer units of either IgM or IgA.

### Applications

Tested applications:	ELISA, WB, IHC
Species specificity:	Human, Mouse, Rat; other species not tested.
Calculated IGJ MW:	158aa, 18 kDa
Observed IGJ MW:	25 kDa
Positive WB detected in	Human plasma tissue, mouse spleen tissue
Positive IHC detected in	Human tonsillitis tissue
Recommended dilution:	WB: 1:500-1:5000 IHC: 1:20-1:200

Application key: WB = Western blotting, IHC = Immunohistochemistry, IF = Immunofluorescence, IP = Immunoprecipitation

### Immunogen information

Immunogen:	Ag4559
GenBank accession number:	BC038982
Gene ID (NCBI):	3512
Full name:	Immunoglobulin J polypeptide, linker protein for immunoglobulin alpha and mu polypeptides

### Product information

Purification method:	Antigen affinity purification
Storage:	PBS with 0.1% sodium azide and 50% glycerol pH 7.3. Store at -20°C.

**13688-1-AP (IGJ Antibody) at  
dilution of 1:1000**