

Mitofilin Polyclonal Antibody

Catalog number: 10179-1-AP

Size: 37 µg/150 µl

Source: Rabbit

Isotype: IgG

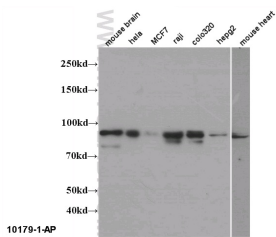
Synonyms:

IMMT; DKFZp779P1653, HMP,

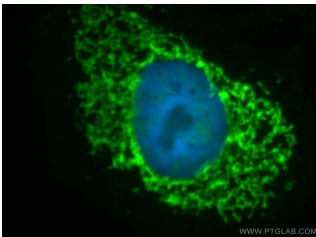
IMMT, MIC60, MINOS2,

Mitofilin, P87, P87/89, P89,

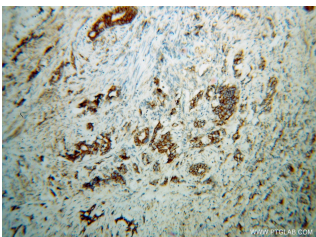
PIG4, PIG52



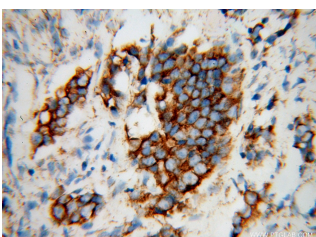
WB result of 10179-1-AP (IMMT antibody) at dilution of 1:1000.



Immunofluorescent analysis of HepG2 cells, using IMMT antibody 10179-1-AP at 1:50 dilution and FITC-labeled donkey anti-rabbit IgG (green). Blue pseudocolor = DAPI (fluorescent DNA dye).



Immunohistochemical of paraffin-embedded human gliomas using 10179-1-AP (IMMT antibody) at dilution of 1:100 (under 10x lens)



Immunohistochemical of

Background

IMMT (also known as mitofilin) is an inner mitochondrial membrane protein that is preferentially expressed in heart tissue and is commonly used as the marker for mitochondria. Mitofilin is known to be a critical organizer of mitochondrial cristae morphology and is indispensable for normal mitochondrial function. Three isoforms of mitofilin exist due to the alternative splicing. All three proteins of 87kD, 89kD and 80kD can be detected in immunoblot analysis with this antibody.

Applications

| | |
|---------------------------------|--|
| Tested applications: | ELISA, IHC, IF, WB, IP, FC |
| Cited applications: | IF, WB |
| Species specificity: | Human, Mouse; other species not tested. |
| Cited species: | Human, mouse, rat |
| Calculated Mitofilin MW: | 90 kDa |
| Observed Mitofilin MW: | 87 kDa, 89 kDa |
| Positive WB detected in | Multi-cells/tissue, COLO 320 cells, HEK-293 cells, HeLa cells, HepG2 cells, human brain tissue, MCF7 cells, Raji cells |
| Positive IP detected in | Raji cells |
| Positive IHC detected in | Human gliomas tissue, human breast cancer tissue |
| Positive IF detected in | HepG2 cells |
| Positive FC detected in | HEK-293T cells |
| Recommended dilution: | WB: 1:500-1:5000 IP: 1:500-1:5000 IHC: 1:20-1:200 IF: 1:20-1:200 FC: N/A |

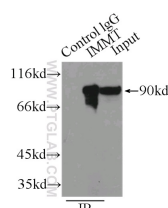
Application key: WB = Western blotting, IHC = Immunohistochemistry, IF = Immunofluorescence, IP = Immunoprecipitation

Immunogen information

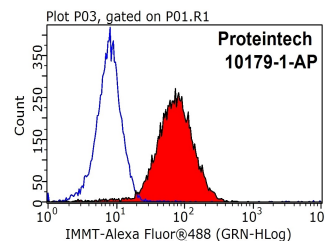
| | |
|----------------------------------|---|
| Immunogen: | Ag0102 |
| GenBank accession number: | BC002412 |
| Gene ID (NCBI): | 10989 |
| Full name: | Inner membrane protein, mitochondrial (mitofilin) |

Product information

| | |
|-----------------------------|---|
| Purification method: | Antigen affinity purification |
| Storage: | PBS with 0.1% sodium azide and 50% glycerol pH 7.3. Store at -20°C. |



IP Result of anti-IMMT



1X10⁶ HEK-293T cells were

paraffin-embedded human gliomas using 10179-1-AP(IMMT antibody) at dilution of 1:100 (under 40x lens)

(IP:10179-1-AP, 3ug; Detection:10179-1-AP 1:1000) with Raji cells lysate 3800ug.

stained with .2ug IMMT antibody (10179-1-AP, red) and control antibody (blue). Fixed with 90% MeOH blocked with 3% BSA (30 min). Alexa Fluor 488-conjugated AffiniPure Goat Anti-Rabbit IgG(H+L) with dilution 1:1000.