

TOM20 Polyclonal Antibody

Catalog number: 11802-1-AP

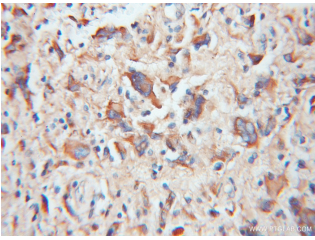
Size: 37 µg/150 µl

Source: Rabbit

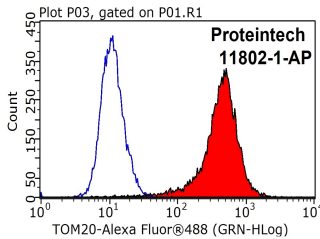
Isotype: IgG

Synonyms:

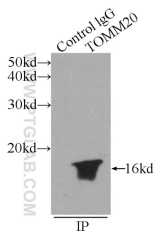
TOMM20; KIAA0016, MAS20, MOM19, TOM20, TOMM20



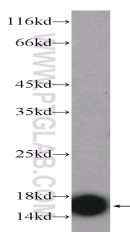
Immunohistochemical of paraffin-embedded human gliomas using 11802-1-AP (TOM20 antibody) at dilution of 1:100 (under 10x lens)



1X10⁶ HeLa cells were stained with 0.2µg TOM20 antibody (11802-1-AP, red) and control antibody (blue). Fixed with 4% PFA blocked with 3% BSA (30 min). Alexa Fluor 488-conjugated AffiniPure Goat Anti-Rabbit IgG(H+L) with dilution 1:1000.



IP Result of anti-TOM20 (IP:11802-1-AP, 3µg; Detection:11802-1-AP 1:2000) with HEK-293 cells lysate 2400µg.



mouse brain tissue were

Background

TOMM20, also named as KIAA0016, belongs to the Tom20 family. It is a central component of the receptor complex responsible for the recognition and translocation of cytosolically synthesized mitochondrial preproteins. Together with TOM22, TOMM20 functions as the transit peptide receptor at the surface of the mitochondrion outer membrane and facilitates the movement of preproteins into the TOM40 translocation pore. TOMM20 is characterized as major docking receptors to mediate the recognition by different mechanisms.

Applications

Tested applications:	ELISA, IHC, WB, IP, FC
Cited applications:	IF, WB
Species specificity:	Human, Mouse; other species not tested.
Cited species:	Human, mouse
Calculated TOM20 MW:	145aa,16 kDa
Observed TOM20 MW:	16kd
Positive WB detected in	Mouse brain tissue, HEK-293 cells, HeLa cells, mouse liver tissue
Positive IP detected in	HEK-293 cells
Positive IHC detected in	Human gliomas tissue
Positive FC detected in	HeLa cells
Recommended dilution:	WB: 1:1000-1:10000 IP: 1:1000-1:10000 IHC: 1:20-1:200 FC: N/A

Application key: WB = Western blotting, IHC = Immunohistochemistry, IF = Immunofluorescence, IP = Immunoprecipitation

Immunogen information

Immunogen:	Ag2378
GenBank accession number:	BC000882
Gene ID (NCBI):	9804
Full name:	Translocase of outer mitochondrial membrane 20 homolog (yeast)

Product information

Purification method:	Antigen affinity purification
Storage:	PBS with 0.1% sodium azide and 50% glycerol pH 7.3. Store at -20°C.

subjected to SDS PAGE
followed by western blot with
11802-1-AP(TOM20
Antibody) at dilution of
1:2000