

RCBTB2 Polyclonal Antibody

Catalog number: 13225-1-AP

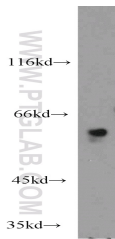
Size: 26 µg/150 µl

Source: Rabbit

Isotype: IgG

Synonyms:

RCBTB2; CHC1L



mouse thymus tissue were subjected to SDS PAGE followed by western blot with 13225-1-AP(RCBTB2 Antibody) at dilution of 1:800

Applications

Tested applications:	ELISA, WB
Cited applications:	WB
Species specificity:	Human, mouse, rat; other species not tested.
Cited species:	Human
Positive WB detected in:	Mouse thymus tissue
Calculated RCBTB2 MW:	551aa,60kd
Observed RCBTB2 MW:	60kd
Recommended dilution:	WB: 1:200-1:2000

Application key: WB = Western blotting, IHC = Immunohistochemistry, IF = Immunofluorescence, IP = Immunoprecipitation, FC = Flow cytometry

Immunogen information

Immunogen:	Ag3975
GenBank accession number:	BC029052
Gene ID (NCBI):	1102
Full name:	Regulator of chromosome condensation (RCC1) and BTB (POZ) domain containing protein 2

Product information

Purification method:	Antigen affinity purification
Storage:	PBS with 0.02% sodium azide and 50% glycerol pH 7.3. Store at -20°C.