

CHRAC1 Polyclonal Antibody

Catalog number: 12126-2-AP

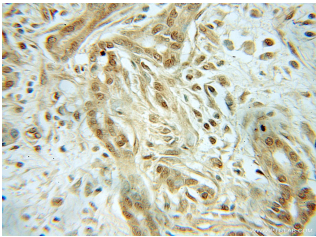
Size: 22 µg/150 µl

Source: Rabbit

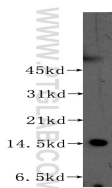
Isotype: IgG

Synonyms:

CHRAC1; CHARC1, CHARC15,
CHRAC 1, CHRAC 15, CHRAC1,
CHRAC15, HuCHRAC15, YCL1



Immunohistochemical of paraffin-embedded human pancreas cancer using 12126-2-AP(CHRAC1 antibody) at dilution of 1:50 (under 10x lens)



K-562 cells were subjected to SDS PAGE followed by western blot with 12126-2-AP(CHRAC1 antibody) at dilution of 1:300

Applications

Tested applications:	ELISA, WB, IHC
Species specificity:	Human, Mouse, Rat; other species not tested.
Calculated CHRAC1 MW:	131aa, 15 kDa
Observed CHRAC1 MW:	15 kDa
Positive WB detected in:	K-562 cells, L02 cells
Positive IHC detected in:	Human pancreas cancer tissue
Recommended dilution:	WB: 1:200-1:1000 IHC: 1:20-1:200

Application key: WB = Western blotting, IHC = Immunohistochemistry, IF = Immunofluorescence, IP = Immunoprecipitation

Immunogen information

Immunogen:	Ag2770
GenBank accession number:	BC015891
Gene ID (NCBI):	54108
Full name:	Chromatin accessibility complex 1

Product information

Purification method:	Antigen affinity purification
Storage:	PBS with 0.1% sodium azide and 50% glycerol pH 7.3. Store at -20°C.