

CTRP4 Polyclonal Antibody

Catalog number: 14023-1-AP

Size: 20 µg/150 µl

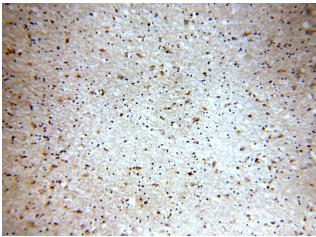
Source: Rabbit

Isotype: IgG

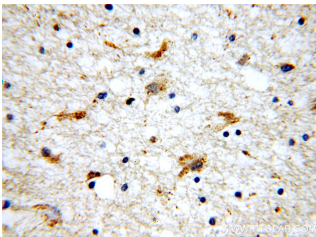
Synonyms:

C1QTNF4; C1QTNF4, CTRP4,

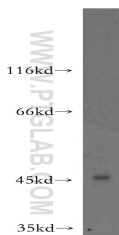
ZACRP4



Immunohistochemical of paraffin-embedded human brain using 14023-1-AP(C1QTNF4 antibody) at dilution of 1:100 (under 10x lens)



Immunohistochemical of paraffin-embedded human brain using 14023-1-AP(C1QTNF4 antibody) at dilution of 1:100 (under 40x lens)



BxPC-3 cells were subjected to SDS PAGE followed by western blot with 14023-1-AP(C1QTNF4 antibody) at dilution of 1:1500

Applications

Tested applications:	ELISA, WB, IHC
Species specificity:	Human, Mouse, Rat; other species not tested.
Calculated CTRP4 MW:	329aa, 35kd
Observed CTRP4 MW:	45kd
Positive WB detected in:	BxPC-3 cells
Positive IHC detected in:	Human brain tissue
Recommended dilution:	WB: 1:750 - 1:3000 IHC: 1:50 - 1:200

Application key: WB = Western blotting, IHC = Immunohistochemistry, IF = Immunofluorescence, IP = Immunoprecipitation

Immunogen information

Immunogen:	Ag5147
GenBank accession number:	BC035628
Gene ID (NCBI):	114900
Full name:	C1q and tumor necrosis factor related protein 4

Product information

Purification method:	Antigen affinity purification
Storage:	PBS with 0.02% sodium azide and 50% glycerol pH 7.3. Store at -20°C.