

TBCE Polyclonal Antibody

Catalog number: 12021-1-AP

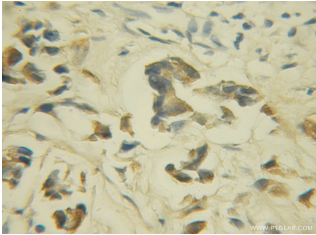
Size: 20 µg/150 µl

Source: Rabbit

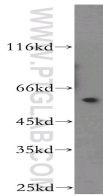
Isotype: IgG

Synonyms:

TBCE; TBCE, tubulin folding cofactor E, HRD, KCS, Tubulin specific chaperone E



Immunohistochemical of paraffin-embedded human prostate cancer using 12021-1-AP (TBCE antibody) at dilution of 1:50 (under 10x lens)



human liver tissue were subjected to SDS PAGE followed by western blot with 12021-1-AP (TBCE antibody) at dilution of 1:500

Applications

Tested applications:	ELISA, WB, IHC
Cited applications:	WB
Species specificity:	Human, mouse, rat; other species not tested.
Cited species:	Human
Calculated TBCE MW:	527aa, 59 kDa
Observed TBCE MW:	59kd
Positive WB detected in	Human liver tissue, COLO 320 cells, HeLa cells, human brain tissue, SH-SY5Y cells
Positive IHC detected in	Human prostate cancer
Recommended dilution:	WB: 1:500-1:5000 IHC: 1:20-1:200

Application key: WB = Western blotting, IHC = Immunohistochemistry, IF = Immunofluorescence, IP = Immunoprecipitation

Immunogen information

Immunogen:	Ag2650
GenBank accession number:	BC008654
Gene ID (NCBI):	6905
Full name:	Tubulin folding cofactor E

Product information

Purification method:	Antigen affinity purification
Storage:	PBS with 0.1% sodium azide and 50% glycerol pH 7.3. Store at -20°C.