

## KIF2A Polyclonal Antibody

Catalog number: 13105-1-AP

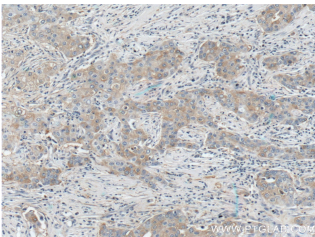
Size: 31 µg/150 µl

Source: Rabbit

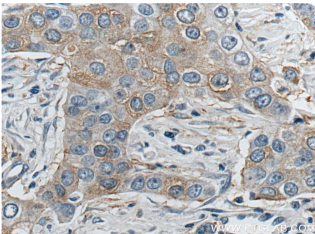
Isotype: IgG

Synonyms:

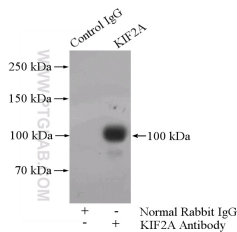
KIF2A; HK2, KIF2, KIF2A,  
Kinesin 2, kinesin heavy chain  
member 2A, Kinesin like  
protein KIF2A, KNS2



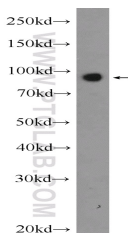
Immunohistochemistry of paraffin-embedded human breast cancer tissue slide using 13105-1-AP (KIF2A Antibody) at dilution of 1:200 (under 10x lens).



Immunohistochemistry of paraffin-embedded human breast cancer tissue slide using 13105-1-AP (KIF2A Antibody) at dilution of 1:200 (under 40x lens).



IP Result of anti-KIF2A (IP:13105-1-AP, 4µg; Detection:13105-1-AP 1:1000) with mouse brain tissue lysate 4000µg.



### Applications

Tested applications:	ELISA, WB, IP, IHC
Species specificity:	Human, Mouse, Rat; other species not tested.
Calculated KIF2A MW:	679aa, 77 kDa
Observed KIF2A MW:	80-100 kDa
Positive WB detected in	HeLa cells, human brain tissue, mouse brain tissue
Positive IP detected in	Mouse brain tissue
Positive IHC detected in	Human breast cancer tissue, human lymphoma tissue
Recommended dilution:	WB: 1:500-1:5000
	IP: 1:500-1:5000
	IHC: 1:20-1:200

Application key: WB = Western blotting, IHC = Immunohistochemistry, IF = Immunofluorescence, IP = Immunoprecipitation

### Immunogen information

Immunogen:	Ag3748
GenBank accession number:	BC031828
Gene ID (NCBI):	3796
Full name:	Kinesin heavy chain member 2A

### Product information

Purification method:	Antigen affinity purification
Storage:	PBS with 0.1% sodium azide and 50% glycerol pH 7.3. Store at -20°C.

HeLa cells were subjected to SDS PAGE followed by western blot with 13105-1-AP( KIF2A Antibody) at dilution of 1:1200