

RPE Polyclonal Antibody

Catalog number: 12168-2-AP

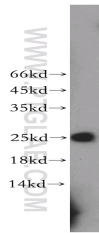
Size: 20 µg/150 µl

Source: Rabbit

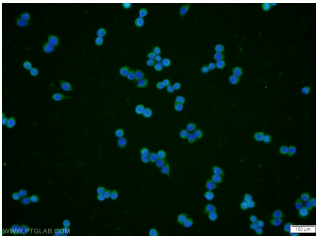
Isotype: IgG

Synonyms:

RPE; ribulose 5 phosphate 3
epimerase, Ribulose phosphate
3 epimerase, RPE, RPE2 1



mouse thymus tissue were subjected to SDS PAGE followed by western blot with 12168-2-AP(RPE antibody) at dilution of 1:200



Immunofluorescent analysis of RAW 264.7 cells using 12168-2-AP(RPE Antibody) at dilution of 1:50 and Alexa Fluor 488-conjugated AffiniPure Goat Anti-Rabbit IgG(H+L)

Applications

Tested applications:	ELISA, WB, IF
Species specificity:	Human,Mouse,Rat; other species not tested.
Calculated RPE MW:	228aa,25 kDa
Observed RPE MW:	25 kDa
Positive WB detected in	Mouse thymus tissue
Positive IF detected in	RAW 264.7 cells
Recommended dilution:	WB: 1:200-1:1000 IF: 1:20-1:200

Application key: WB = Western blotting, IHC = Immunohistochemistry, IF = Immunofluorescence, IP = Immunoprecipitation

Immunogen information

Immunogen:	Ag2810
GenBank accession number:	BC016764
Gene ID (NCBI):	6120
Full name:	Ribulose-5-phosphate-3-epimerase

Product information

Purification method:	Antigen affinity purification
Storage:	PBS with 0.1% sodium azide and 50% glycerol pH 7.3. Store at -20°C.