

ARH Polyclonal Antibody

Catalog number: 13213-1-AP

Size: 35 µg/150 µl

Source: Rabbit

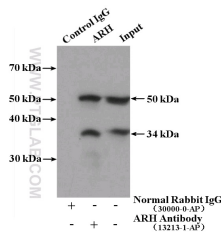
Isotype: IgG

Synonyms:

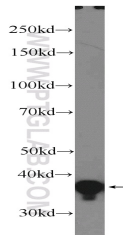
LDLRAP1; ARH, ARH1, ARH2,

DKFZp586D0624, FHCB1,

FHCB2, LDLRAP1



IP Result of anti-LDLRAP1 (IP:13213-1-AP, 4µg; Detection:13213-1-AP 1:1000) with HEK-293 cells lysate 3000µg.



HeLa cells were subjected to SDS PAGE followed by western blot with 13213-1-AP (LDLRAP1 Antibody) at dilution of 1:1000

Applications

Tested applications:	ELISA, WB, IP
Species specificity:	Human, Mouse, Rat; other species not tested.
Calculated ARH MW:	308aa, 34 kDa
Observed ARH MW:	34 kDa
Positive WB detected in:	HeLa cells
Positive IP detected in:	HEK-293 cells
Recommended dilution:	WB: 1:500-1:5000 IP: 1:500-1:5000

Application key: WB = Western blotting, IHC = Immunohistochemistry, IF = Immunofluorescence, IP = Immunoprecipitation

Immunogen information

Immunogen:	Ag4006
GenBank accession number:	BC029770
Gene ID (NCBI):	26119
Full name:	Low density lipoprotein receptor adaptor protein 1

Product information

Purification method:	Antigen affinity purification
Storage:	PBS with 0.02% sodium azide and 50% glycerol pH 7.3. Store at -20°C.