

CD138/Syndecan-1 Polyclonal Antibody

Catalog number: 10593-1-AP

Size: 27 µg/150 µl

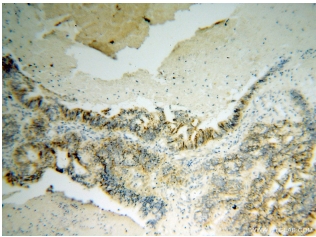
Source: Rabbit

Isotype: IgG

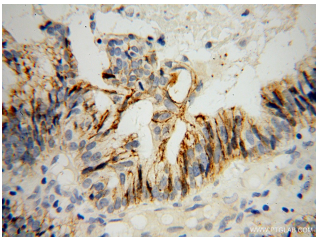
Synonyms:

SDC1; CD138, SDC, SDC1,

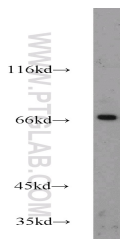
SYND1, syndecan, syndecan 1



Immunohistochemical of paraffin-embedded human ovary tumor using 10593-1-AP(SDC1,CD138 antibody) at dilution of 1:100 (under 10x lens)



Immunohistochemical of paraffin-embedded human ovary tumor using 10593-1-AP(SDC1,CD138 antibody) at dilution of 1:100 (under 40x lens)



Raji cells were subjected to SDS PAGE followed by western blot with 10593-1-AP(SDC1,CD138 antibody) at dilution of 1:600

Background

Syndecan-1 (SDC1), also named CD138, is an integral membrane protein. It participates in cell proliferation, cell migration and cell-matrix interactions via its receptor for extracellular matrix proteins. It is a heparan sulfate proteoglycan expressed on the surface of, and actively shed by, myeloma cells. Altered syndecan-1 expression has been detected in several different tumor types. SDC1 was regarded as a useful marker for labeling normal and neoplastic plasma cells and plasmacytoid lymphomas.

Applications

Tested applications:	ELISA, WB, IHC
Cited applications:	CoIP, dot blotting, IF, IHC
Species specificity:	Human,Mouse,Rat; other species not tested.
Cited species:	Human
Calculated CD138/Syndecan-1 MW:	32.5 kDa
Observed CD138/Syndecan-1 MW:	60-100 kDa
Positive WB detected in:	Raji cells, HeLa cells
Positive IHC detected in:	Human ovary tumor tissue
Recommended dilution:	WB: 1:200-1:2000 IHC: 1:20-1:200

Application key: WB = Western blotting, IHC = Immunohistochemistry, IF = Immunofluorescence, IP = Immunoprecipitation

Immunogen information

Immunogen:	Ag0823
GenBank accession number:	BC008765
Gene ID (NCBI):	6382
Full name:	Syndecan 1

Product information

Purification method:	Antigen affinity purification
Storage:	PBS with 0.1% sodium azide and 50% glycerol pH 7.3. Store at -20°C.