

Caspase 10/p23/17/p12 Polyclonal Antibody

Catalog number: 14311-1-AP

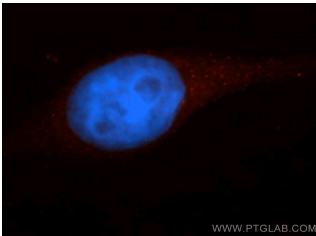
Size: 20 µg/150 µl

Source: Rabbit

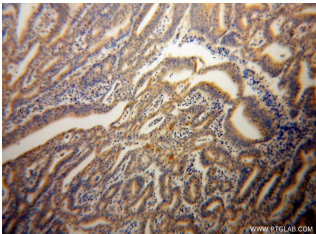
Isotype: IgG

Synonyms:

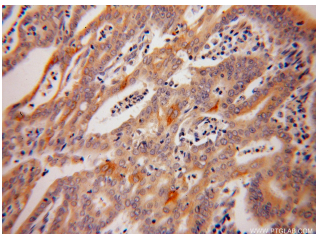
CASP10; ALPS2, Apoptotic protease Mch 4, CASP 10, CASP10, Caspase 10, Caspase 10/p23/17/p12, Caspase10, FLICE2, ICE like apoptotic protease 4, MCH4



Immunofluorescent analysis of HepG2 cells, using CASP10 antibody 14311-1-AP at 1:50 dilution and Rhodamine-labeled goat anti-rabbit IgG (red). Blue pseudocolor = DAPI (fluorescent DNA dye).



Immunohistochemical of paraffin-embedded human endometrial cancer using 14311-1-AP(CASP10 antibody) at dilution of 1:100 (under 10x lens)



Immunohistochemical of paraffin-embedded human endometrial cancer using 14311-1-AP(CASP10 antibody) at dilution of 1:100 (under 40x lens)

Background

CASP10(Caspase-10) is also named as MCH4 and belongs to the peptidase C14A family. It is recruited to the CD99 and p55 tumor necrosis factor receptor signaling complexes and promoting CD95 (APO1/Fas) apoptosis. It may also play a critical role in PTK7-knockdown-induced apoptosis, downstream of mitochondria(PMID:21103379). This protein can be Cleavage by granzyme B and autocatalytic activity generate two active subunits. Defects in CASP10 are the cause of autoimmune lymphoproliferative syndrome type 2A (ALPS2A)(PMID:16446975), familial non-Hodgkin lymphoma (NHL)(PMID:12010812) and gastric cancer (GASC)(PMID:11973654). The full length has a propeptide with 219 amino acid and 6 isoforms produced by alternative splicing.

Applications

Tested applications:	ELISA, WB, IHC, IF, IP
Species specificity:	Human; other species not tested.
Calculated Caspase 10/p23/17/p12 MW:	59 kDa
Observed Caspase 10/p23/17/p12 MW:	59 kDa
Positive WB detected in	HeLa cells, Apoptosised HeLa cells
Positive IP detected in	HeLa cells
Positive IHC detected in	Human endometrial cancer tissue
Positive IF detected in	HepG2 cells
Recommended dilution:	WB: 1:200-1:2000 IP: 1:200-1:1000 IHC: 1:20-1:200 IF: 1:20-1:200

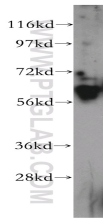
Application key: WB = Western blotting, IHC = Immunohistochemistry, IF = Immunofluorescence, IP = Immunoprecipitation

Immunogen information

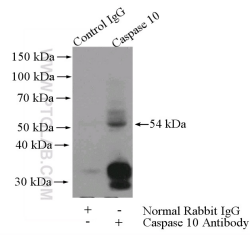
Immunogen:	Ag5511
GenBank accession number:	BC042844
Gene ID (NCBI):	843
Full name:	Caspase 10, apoptosis-related cysteine peptidase

Product information

Purification method:	Antigen affinity purification
Storage:	PBS with 0.02% sodium azide and 50% glycerol pH 7.3. Store at -20°C.



HeLa cells were subjected to SDS PAGE followed by western blot with 14311-1-AP(CASP10 antibody) at dilution of 1:300



IP Result of anti-Caspase 10 (IP:14311-1-AP, 4ug; Detection:14311-1-AP 1:300) with HeLa cells lysate 3200ug.