

## IRF2BP1 Polyclonal Antibody

Catalog number: 13698-1-AP

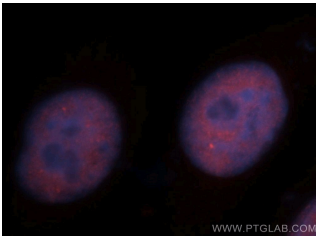
Size: 20 µg/150 µl

Source: Rabbit

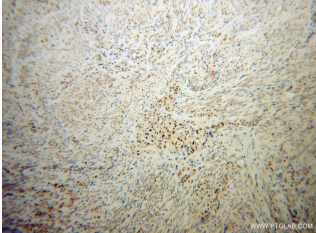
Isotype: IgG

Synonyms:

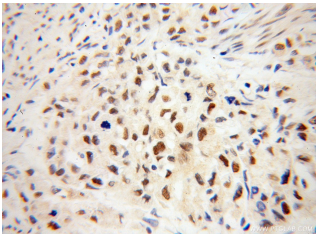
IRF2BP1; DKFZp434M154, IRF 2 binding protein 1, IRF 2BP1, IRF2BP1



Immunofluorescent analysis of HeLa cells, using IRF2BP1 antibody 13698-1-AP at 1:50 dilution and Rhodamine-labeled goat anti-rabbit IgG (red). Blue pseudocolor = DAPI (fluorescent DNA dye).



Immunohistochemical of paraffin-embedded human endometrial cancer using 13698-1-AP (IRF2BP1 antibody) at dilution of 1:50 (under 10x lens)



Immunohistochemical of paraffin-embedded human endometrial cancer using 13698-1-AP (IRF2BP1 antibody) at dilution of 1:50 (under 40x lens)

### Applications

Tested applications:	ELISA, WB, IHC, IF, IP
Species specificity:	Human, Mouse, Rat; other species not tested.
Calculated IRF2BP1 MW:	584aa, 62 kDa
Observed IRF2BP1 MW:	62-72 kDa
Positive WB detected in	HeLa cells, HEK-293 cells, Jurkat cells, mouse brain tissue, rat lymph tissue
Positive IP detected in	HEK-293 cells
Positive IHC detected in	Human endometrial cancer tissue
Positive IF detected in	HeLa cells
Recommended dilution:	WB: 1:200-1:2000 IP: 1:200-1:2000 IHC: 1:20-1:200 IF: 1:20-1:200

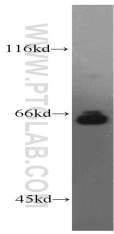
Application key: WB = Western blotting, IHC = Immunohistochemistry, IF = Immunofluorescence, IP = Immunoprecipitation

### Immunogen information

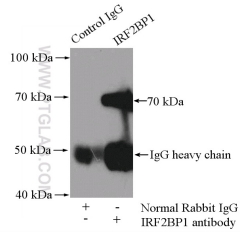
Immunogen:	Ag4596
GenBank accession number:	BC038222
Gene ID (NCBI):	26145
Full name:	Interferon regulatory factor 2 binding protein 1

### Product information

Purification method:	Antigen affinity purification
Storage:	PBS with 0.02% sodium azide and 50% glycerol pH 7.3. Store at -20°C.



HeLa cells were subjected to SDS PAGE followed by western blot with 13698-1-AP (IRF2BP1 antibody) at dilution of 1:800



IP Result of anti-IRF2BP1 (IP:13698-1-AP, 4ug; Detection:13698-1-AP 1:500) with HEK-293 cells lysate 2000ug.