

KPNA6 Polyclonal Antibody

Catalog number: 12366-2-AP

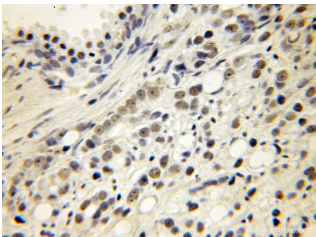
Size: 29 µg/150 µl

Source: Rabbit

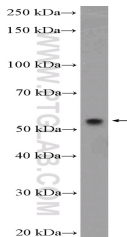
Isotype: IgG

Synonyms:

KPNA6; FLJ11249, Importin subunit alpha 7, IPOA7, Karyopherin subunit alpha 6, KPNA6, KPNA7



Immunohistochemical of paraffin-embedded human prostate cancer using 12366-2-AP (KPNA6 antibody) at dilution of 1:50 (under 10x lens)



BxPC-3 cells were subjected to SDS PAGE followed by western blot with 12366-2-AP (KPNA6 Antibody) at dilution of 1:600

Applications

Tested applications:	ELISA, IHC, WB
Species specificity:	Human; other species not tested.
Calculated KPNA6 MW:	536aa, 60 kDa
Observed KPNA6 MW:	55-60 kDa
Positive WB detected in:	BxPC-3 cells, HeLa cells
Positive IHC detected in:	Human prostate cancer tissue
Recommended dilution:	WB: 1:200-1:2000 IHC: 1:20-1:200

Application key: WB = Western blotting, IHC = Immunohistochemistry, IF = Immunofluorescence, IP = Immunoprecipitation

Immunogen information

Immunogen:	Ag3040
GenBank accession number:	BC020520
Gene ID (NCBI):	23633
Full name:	Karyopherin alpha 6 (importin alpha 7)

Product information

Purification method:	Antigen affinity purification
Storage:	PBS with 0.1% sodium azide and 50% glycerol pH 7.3. Store at -20°C.