

## KLHL2 Polyclonal Antibody

Catalog number: 14449-1-AP

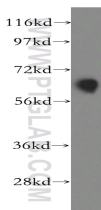
Size: 33 µg/150 µl

Source: Rabbit

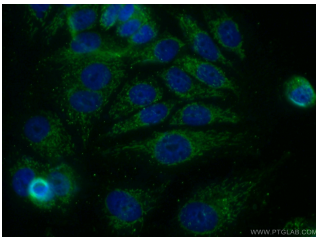
Isotype: IgG

Synonyms:

KLHL2; ABP KELCH, Actin binding protein Mayven, Kelch like protein 2, KLHL2, MAV, MAYVEN



MCF7 cells were subjected to SDS PAGE followed by western blot with 14449-1-AP(KLHL2 antibody) at dilution of 1:500



Immunofluorescent analysis of MCF-7 cells using 14449-1-AP( KLHL2 Antibody) at dilution of 1:50 and Alexa Fluor 488-conjugated AffiniPure Goat Anti-Rabbit IgG(H+L)

### Applications

|                         |  |
|-------------------------|--|
| Tested applications:    | ELISA, WB, IF                              |
| Species specificity:    | Human,Mouse,Rat; other species not tested. |
| Calculated KLHL2 MW:    | 66 kDa                                     |
| Observed KLHL2 MW:      | 66 kDa                                     |
| Positive WB detected in | MCF7 cells, human brain tissue             |
| Positive IF detected in | MCF-7 cells                                |
| Recommended dilution:   | WB: 1:500-1:5000<br>IF: 1:20-1:200         |

Application key: WB = Western blotting, IHC = Immunohistochemistry, IF = Immunofluorescence, IP = Immunoprecipitation

### Immunogen information

|                           |                                   |
|---------------------------|-----------------------------------|
| Immunogen:                | Ag5950                            |
| GenBank accession number: | BC022503                          |
| Gene ID (NCBI):           | 11275                             |
| Full name:                | Kelch-like 2, Mayven (Drosophila) |

### Product information

|                      |  |
|----------------------|--|
| Purification method: | Antigen affinity purification  |
| Storage:             | PBS with 0.02% sodium azide and 50% glycerol pH 7.3. Store at -20°C. |