

LRG1 Polyclonal Antibody

Catalog number: 13224-1-AP

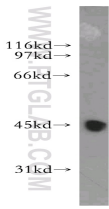
Size: 35 µg/150 µl

Source: Rabbit

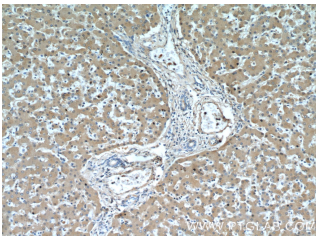
Isotype: IgG

Synonyms:

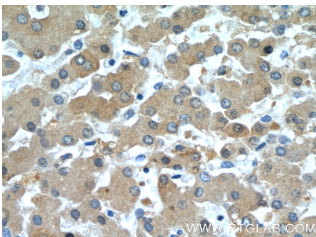
LRG1; HMFT1766, LRG, LRG1



HepG2 cells were subjected to SDS PAGE followed by western blot with 13224-1-AP(LRG1 antibody) at dilution of 1:400



Immunohistochemistry of paraffin-embedded human liver slide using 13224-1-AP(LRG1 Antibody) at dilution of 1:50



Immunohistochemistry of paraffin-embedded human liver slide using 13224-1-AP(LRG1 Antibody) at dilution of 1:50

Background

LRG1, also known as LRG, is a member of the leucine-rich repeat (LRR) family of proteins, containing eight LRR (leucine-rich) repeats and one LRRCT domain. The gene of LRG1 maps to chromosome 19p13.3, and encodes a 347-amino acid protein with a predicted unmodified molecular weight of 38 kD. The mature form of LRG1 is a secreted glycoprotein which has 312 amino acids and an experimentally determined molecular mass of 45 kD. The LRR family of proteins, including LRG1, have been shown to be involved in protein-protein interaction, signal transduction, and cell adhesion and development. LRG1 is expressed during granulocyte differentiation. Levels of the LRG protein are markedly elevated in acute appendicitis and therefore could be used as a diagnostic aid.

Applications

Tested applications:	ELISA, WB, IHC
Cited applications:	IHC, WB
Species specificity:	Human, Mouse; other species not tested.
Cited species:	Human
Calculated LRG1 MW:	347aa, 38 kDa
Observed LRG1 MW:	45 kDa
Positive WB detected in	HepG2 cells, HEK-293 cells, HL-60 cells, L02 cells
Positive IHC detected in	Human liver tissue, human pancreas cancer tissue
Recommended dilution:	WB: 1:500-1:5000 IHC: 1:20-1:200

Application key: WB = Western blotting, IHC = Immunohistochemistry, IF = Immunofluorescence, IP = Immunoprecipitation

Immunogen information

Immunogen:	Ag3964
GenBank accession number:	BC034389
Gene ID (NCBI):	116844
Full name:	Leucine-rich alpha-2-glycoprotein 1

Product information

Purification method:	Antigen affinity purification
Storage:	PBS with 0.02% sodium azide and 50% glycerol pH 7.3. Store at -20°C.