

Neuroserpin Polyclonal Antibody

Catalog number: 12558-1-AP

Size: 33 µg/150 µl

Source: Rabbit

Isotype: IgG

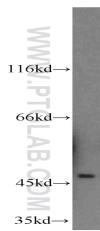
Synonyms:

SERPINI1; DKFZp781N13156,

neuroserpin, Peptidase

inhibitor 12, PI 12, PI12, Serpin

I1, SERPINI1



mouse brain tissue were subjected to SDS PAGE followed by western blot with 12558-1-AP(SERPINI1 antibody) at dilution of 1:500

Applications

Tested applications: ELISA, WB
Species specificity: Human, Mouse, Rat; other species not tested.
Calculated Neuroserpin MW: 410aa, 47kd
Observed Neuroserpin MW: 46kd
Positive WB detected in: Mouse brain tissue
Recommended dilution: WB: 1:300 - 1:1200

Application key: WB = Western blotting, IHC = Immunohistochemistry, IF = Immunofluorescence, IP = Immunoprecipitation

Immunogen information

Immunogen: Ag3275
GenBank accession number: BC018043
Gene ID (NCBI): 5274
Full name: Serpin peptidase inhibitor, clade I (neuroserpin), member 1

Product information

Purification method: Antigen affinity purification
Storage: PBS with 0.02% sodium azide and 50% glycerol pH 7.3. Store at -20°C.