

## RBMS1 Polyclonal Antibody

Catalog number: 11061-2-AP

Size: 38 µg/150 µl

Source: Rabbit

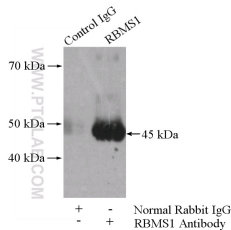
Isotype: IgG

Synonyms:

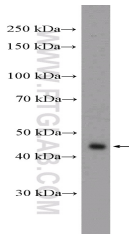
RBMS1; C2orf12,  
DKFZp564H0764, HCC 4, MSSP,  
MSSP 1, MSSP 2, MSSP 3,  
MSSP1, RBMS1, SCR2, YC1



Immunofluorescent analysis of HepG2 cells, using RBMS1 antibody 11061-2-AP at 1:100 dilution and FITC-labeled donkey anti-rabbit IgG(green). Blue pseudocolor = DAPI (fluorescent DNA dye).



IP Result of anti-RBMS1 (IP:11061-2-AP, 4µg; Detection:11061-2-AP 1:500) with HeLa cells lysate 1200ug.



HeLa cells were subjected to SDS PAGE followed by western blot with 11061-2-AP( RBMS1 Antibody) at dilution of 1:1000

### Applications

Tested applications:	ELISA, IF, WB, IP
Species specificity:	Human,Mouse,Rat; other species not tested.
Calculated RBMS1 MW:	45 kDa
Observed RBMS1 MW:	45 kDa
Positive WB detected in:	HeLa cells
Positive IP detected in:	HeLa cells
Positive IF detected in:	HepG2 cells
Recommended dilution:	WB: 1:500-1:5000
	IP: 1:200-1:2000
	IF: 1:20-1:200

Application key: WB = Western blotting, IHC= Immunohistochemistry, IF= Immunofluorescence, IP= Immunoprecipitation

### Immunogen information

Immunogen:	Ag1493
GenBank accession number:	BC018951
Gene ID (NCBI):	5937
Full name:	RNA binding motif, single stranded interacting protein 1

### Product information

Purification method:	Antigen affinity purification
Storage:	PBS with 0.1% sodium azide and 50% glycerol pH 7.3. Store at -20°C.