

PES1 Polyclonal Antibody

Catalog number: 13553-1-AP

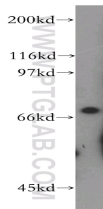
Size: 20 µg/150 µl

Source: Rabbit

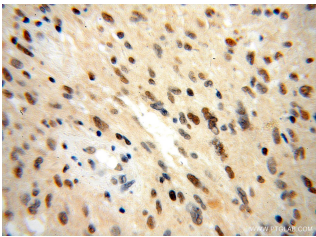
Isotype: IgG

Synonyms:

PES1; PES



human kidney tissue were subjected to SDS PAGE followed by western blot with 13553-1-AP(PES1 Antibody) at dilution of 1:1000



Immunohistochemistry of paraffin-embedded human gliomas using 13553-1-AP(PES1 Antibody) at Dilution 1:100 (under 40x lens)

Applications

Tested applications:	ELISA, WB, IHC
Species specificity:	Human, mouse, rat; other species not tested.
Positive WB detected in:	Human kidney tissue
Calculated PES1 MW:	588aa,68kd
Observed PES1 MW:	72kd
Positive IHC detected in:	Human gliomas
Recommended dilution:	WB: 1:500-1:5000
	IHC: 1:50-1:200

Application key: WB = Western blotting, IHC = Immunohistochemistry, IF = Immunofluorescence, IP = Immunoprecipitation, FC = Flow cytometry

Immunogen information

Immunogen:	Ag4342
GenBank accession number:	BC032489
Gene ID (NCBI):	23481
Full name:	Pescadillo homolog 1, containing BRCT domain (zebrafish)

Product information

Purification method:	Antigen affinity purification
Storage:	PBS with 0.02% sodium azide and 50% glycerol pH 7.3. Store at -20°C.