

SGEF Polyclonal Antibody

Catalog number: 12493-1-AP

Size: 21 µg/150 µl

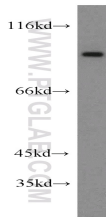
Source: Rabbit

Isotype: IgG

Synonyms:

SGEF; CSGEF; DKFZp434D146;

HMFN1864



PC-3 cells were subjected to SDS PAGE followed by western blot with 12493-1-AP(SGEF Antibody) at dilution of 1:800

Applications

Tested applications:	ELISA, WB
Cited applications:	FACS
Species specificity:	Human; other species not tested.
Cited species:	Mouse
Positive WB detected in:	PC-3 cells, HeLa cells
Calculated SGEF MW:	97kd
Observed SGEF MW:	97kd
Recommended dilution:	WB: 1:200-1:2000

Application key: WB = Western blotting, IHC = Immunohistochemistry, IF = Immunofluorescence, IP = Immunoprecipitation, FC = Flow cytometry

Immunogen information

Immunogen:	Ag3198
GenBank accession number:	BC016628
Gene ID (NCBI):	26084
Full name:	Src homology 3 domain-containing guanine nucleotide exchange factor

Product information

Purification method:	Antigen affinity purification
Storage:	PBS with 0.02% sodium azide and 50% glycerol pH 7.3. Store at -20°C.