

KIN Polyclonal Antibody

Catalog number: 12313-1-AP

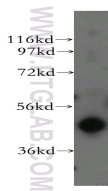
Size: 26 µg/150 µl

Source: Rabbit

Isotype: IgG

Synonyms:

KIN; BTCD; KIN17



mouse testis tissue were subjected to SDS PAGE followed by western blot with 12313-1-AP(KIN Antibody) at dilution of 1:2000

Applications

Tested applications:	ELISA, WB
Species specificity:	Human, mouse, rat; other species not tested.
Positive WB detected in:	Mouse testis tissue, HeLa cells, human heart tissue
Calculated KIN MW:	393aa,45kd
Observed KIN MW:	45kd
Recommended dilution:	WB: 1:1000-1:10000

Application key: WB = Western blotting, IHC = Immunohistochemistry, IF = Immunofluorescence, IP =

Immunoprecipitation, FC = Flow cytometry

Immunogen information

Immunogen:	Ag2963
GenBank accession number:	BC017309
Gene ID (NCBI):	22944
Full name:	KIN, antigenic determinant of recA protein homolog (mouse)

Product information

Purification method:	Antigen affinity purification
Storage:	PBS with 0.1% sodium azide and 50% glycerol pH 7.3. Store at -20°C.