

## NDE1 Polyclonal Antibody

Catalog number: 10233-1-AP

Size: 68 µg/150 µl

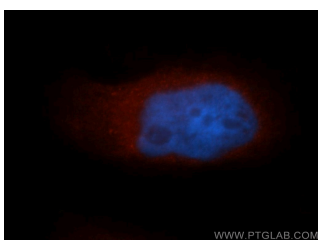
Source: Rabbit

Isotype: IgG

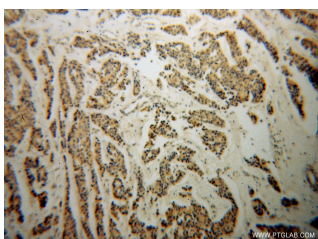
Synonyms:

NDE1; FLJ20101, HOM TES 87,

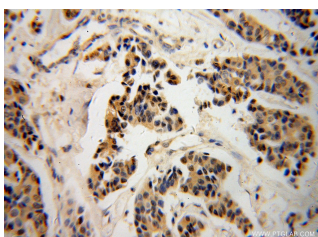
NDE1, NUDE, NUDE1



Immunofluorescent analysis of MCF-7 cells, using NDE1 antibody 10233-1-AP at 1:50 dilution and Rhodamine-labeled goat anti-rabbit IgG (red). Blue pseudocolor = DAPI (fluorescent DNA dye).



Immunohistochemical of paraffin-embedded human breast cancer using 10233-1-AP (NDE1 antibody) at dilution of 1:100 (under 10x lens)



Immunohistochemical of paraffin-embedded human breast cancer using 10233-1-AP (NDE1 antibody) at dilution of 1:100 (under 40x lens)

### Background

NDE1 (NUDE /NUDE1) is a LIS1-interacting protein. A signaling pathway containing NDE1, LIS1, and cytoplasmic dynein is conserved for eukaryotic nuclear migration and has profound impact on neuronal migration during development of the central nervous system. LIS1 and dynein have been shown to be involved in mitosis and NDE1 participates in a subset of dynein function in M phase. NDE1 is specifically phosphorylated in M phase in its serine/threonine phosphorylation motifs, probably by Cdc2 and also Erk1 and Erk2. A fraction of NDE1 binds to centrosomes strongly in interphase and is localized to mitotic spindles in early M phase. Phosphorylation of NDE1 also regulates the cell-cycle-dependent distribution, possibly by increasing its dissociation rate at the microtubule-organizing center. This antibody is a rabbit polyclonal antibody raised against a peptide mapping within human NDE1.

### Applications

Tested applications:	ELISA, WB, IHC, IF, IP
Cited applications:	IF, IHC, WB
Species specificity:	Human, Mouse, Rat; other species not tested.
Cited species:	Human, mouse
Calculated NDE1 MW:	335aa, 38kd
Observed NDE1 MW:	40kd
Positive WB detected in	A2780 cells, HEK-293 cells, HeLa cells, mouse liver tissue, rat liver tissue
Positive IP detected in	HEK-293 cells
Positive IHC detected in	Human breast cancer tissue, human colon cancer tissue
Positive IF detected in	MCF-7 cells
Recommended dilution:	WB: 1:500-1:5000 IP: 1:500-1:5000 IHC: 1:20-1:200 IF: 1:20-1:200

Application key: WB = Western blotting, IHC = Immunohistochemistry, IF = Immunofluorescence, IP = Immunoprecipitation

### Immunogen information

Immunogen:	Ag0336
GenBank accession number:	BC001421
Gene ID (NCBI):	54820
Full name:	NudE nuclear distribution gene E homolog 1 (A. nidulans)

### Product information

Purification method:	Antigen affinity purification
Storage:	PBS with 0.1% sodium azide and 50% glycerol pH 7.3. Store at -20°C.