

SLA/LP Polyclonal Antibody

Catalog number: 11551-1-AP

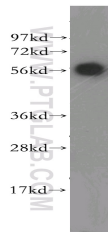
Size: 22 µg/150 µl

Source: Rabbit

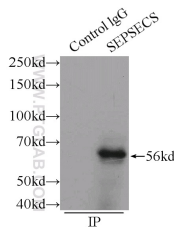
Isotype: IgG

Synonyms:

SEPSECS; Liver pancreas antigen, LP, Sec synthase, Selenocysteine synthase, Sep tRNA:Sec tRNA synthase, SEPSECS, SLA, SLA p35, SLA/LP, SLA/LP autoantigen, Soluble liver antigen, TRNP48



HeLa cells were subjected to SDS PAGE followed by western blot with 11551-1-AP(SEPSECS antibody) at dilution of 1:400



IP Result of anti-SEPSECS (IP:11551-1-AP, 3µg; Detection:11551-1-AP 1:800) with mouse liver tissue lysate 6000µg.

Applications

Tested applications:	ELISA, WB, IP
Species specificity:	Human,Mouse,Rat; other species not tested.
Calculated SLA/LP MW:	501aa,56 kDa
Observed SLA/LP MW:	56kd
Positive WB detected in	HeLa cells, human kidney tissue, human lung tissue
Positive IP detected in	Mouse liver tissue
Recommended dilution:	WB: 1:500-1:5000 IP: 1:200-1:2000

Application key: WB = Western blotting, IHC = Immunohistochemistry, IF = Immunofluorescence, IP = Immunoprecipitation

Immunogen information

Immunogen:	Ag2097
GenBank accession number:	BC023539
Gene ID (NCBI):	51091
Full name:	Sep (O-phosphoserine) tRNA:Sec (selenocysteine) tRNA synthase

Product information

Purification method:	Antigen affinity purification
Storage:	PBS with 0.1% sodium azide and 50% glycerol pH 7.3. Store at -20°C.