

COX6C Polyclonal Antibody

Catalog number: 11429-2-AP

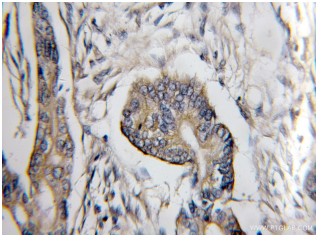
Size: 26 µg/150 µl

Source: Rabbit

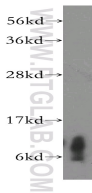
Isotype: IgG

Synonyms:

COX6C; COX6C



Immunohistochemical of paraffin-embedded human pancreas cancer using 11429-2-AP(COX6C antibody) at dilution of 1:50 (under 10x lens)



human heart tissue were subjected to SDS PAGE followed by western blot with 11429-2-AP(COX6C antibody) at dilution of 1:400

Background

Cytochrome c oxidase (COX) is the terminal oxidase in the respiratory chain in human and other mammalian cells. The enzyme is composed of 13 different subunits. COX6C(Cytochrome c oxidase subunit 6C) is one of the nuclear-coded polypeptide chains of cytochrome c oxidase, the terminal oxidase in mitochondrial electron transport.

Applications

Tested applications:	ELISA, WB, IHC
Cited applications:	WB
Species specificity:	Human, Mouse, Rat; other species not tested.
Cited species:	Human
Calculated COX6C MW:	75aa, 9 kDa
Observed COX6C MW:	9kd
Positive WB detected in	Human heart tissue
Positive IHC detected in	Human pancreas cancer tissue
Recommended dilution:	WB: 1:200-1:2000 IHC: 1:20-1:200

Application key: WB = Western blotting, IHC = Immunohistochemistry, IF = Immunofluorescence, IP = Immunoprecipitation

Immunogen information

Immunogen:	Ag1982
GenBank accession number:	BC000187
Gene ID (NCBI):	1345
Full name:	Cytochrome c oxidase subunit VIc

Product information

Purification method:	Antigen affinity purification
Storage:	PBS with 0.1% sodium azide and 50% glycerol pH 7.3. Store at -20°C.