

Glycerokinase Polyclonal Antibody

Catalog number: 13360-1-AP

Size: 90 µg/150 µl

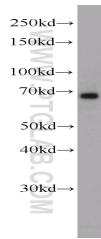
Source: Rabbit

Isotype: IgG

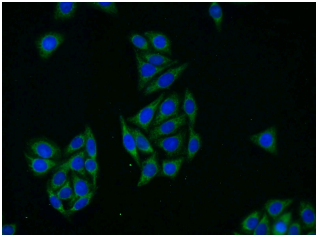
Synonyms:

GK; GK, GK1, GKD,

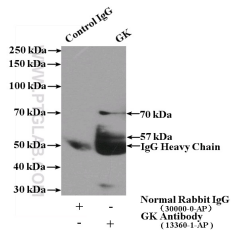
Glycerokinase, glycerol kinase



HepG2 cells were subjected to SDS PAGE followed by western blot with 13360-1-AP(GK antibody) at dilution of 1:1000



Immunofluorescent analysis of HepG2 cells using 13360-1-AP(GK Antibody) at dilution of 1:25 and Alexa Fluor 488-conjugated AffiniPure Goat Anti-Rabbit IgG(H+L)



IP Result of anti-GK (IP:13360-1-AP, 4ug; Detection:13360-1-AP 1:1000) with HepG2 cells lysate 4000ug.

Applications

Tested applications:	ELISA, WB, IF, IP
Species specificity:	Human, Mouse, Rat; other species not tested.
Calculated Glycerokinase MW:	524aa, 57 kDa
Observed Glycerokinase MW:	60-65 kDa
Positive WB detected in	HepG2 cells, mouse kidney tissue, mouse liver tissue, mouse testis tissue
Positive IP detected in	HepG2 cells
Positive IF detected in	HepG2 cells
Recommended dilution:	WB: 1:500-1:5000 IP: 1:500-1:5000 IF: 1:10-1:100

Application key: WB = Western blotting, IHC = Immunohistochemistry, IF = Immunofluorescence, IP = Immunoprecipitation

Immunogen information

Immunogen:	Ag4175
GenBank accession number:	BC037549
Gene ID (NCBI):	2710
Full name:	Glycerol kinase

Product information

Purification method:	Antigen affinity purification
Storage:	PBS with 0.02% sodium azide and 50% glycerol pH 7.3. Store at -20°C.