

## DCLRE1B Polyclonal Antibody

Catalog number: 13203-1-AP

Size: 46 µg/150 µl

Source: Rabbit

Isotype: IgG

Synonyms:

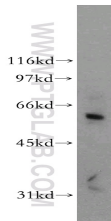
DCLRE1B; 5 exonuclease

Apollo, APOLLO, DCLRE1B,

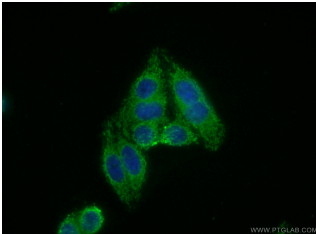
DKFZp686C24187, FLJ12810,

FLJ13998, hSNM1B, SNM1

homolog B, SNM1B, SNMIB



Jurkat cells were subjected to SDS PAGE followed by western blot with 13203-1-AP(DCLRE1B antibody) at dilution of 1:800



Immunofluorescent analysis of ( 10% Formaldehyde ) fixed HepG2 cells using 13203-1-AP( DCLRE1B Antibody) at dilution of 1:50 and Alexa Fluor 488-conjugated AffiniPure Goat Anti-Rabbit IgG(H+L)

### Background

Interstrand cross-links (ICLs) is an extremely cytotoxic form of DNA damage that covalently tethers the two strands of the double helix, which inhibits fundamental nuclear functions, including transcription and DNA replication [PMID:21701511]. DCLRE1B is one of several evolutionarily conserved genes involved in repair of interstrand cross-links [PMID:10848582]. Furthermore, DCLRE1B was identified as a TRF2-interacting protein and, has a role in telomere maintenance in association with the Shelterin complex, preventing non-homologous end-joining-mediated chromosome fusions protecting leading strand telomeres [PMID:20619712].

### Applications

Tested applications:	ELISA, WB, IF
Species specificity:	Human,Mouse,Rat; other species not tested.
Calculated DCLRE1B MW:	532aa,60 kDa
Observed DCLRE1B MW:	60 kDa
Positive WB detected in	Jurkat cells, HepG2 cells
Positive IF detected in	HepG2 cells
Recommended dilution:	WB: 1:200-1:2000 IF: 1:50-1:500

Application key: WB = Western blotting, IHC = Immunohistochemistry, IF = Immunofluorescence, IP = Immunoprecipitation

### Immunogen information

Immunogen:	Ag3945
GenBank accession number:	BC029687
Gene ID (NCBI):	64858
Full name:	DNA cross-link repair 1B (PSO2 homolog, S. cerevisiae)

### Product information

Purification method:	Antigen affinity purification
Storage:	PBS with 0.02% sodium azide and 50% glycerol pH 7.3. Store at -20°C.